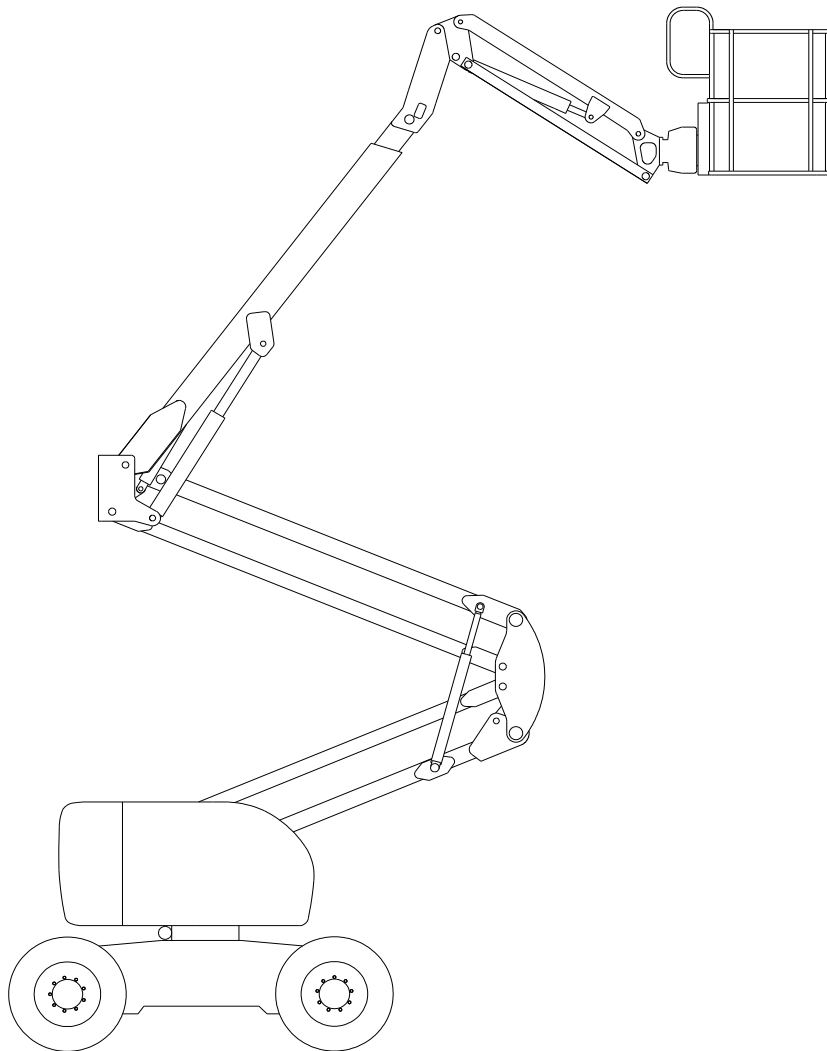




**SINOBOOM**  
星邦重工

---

Parts Manual  
GTZZ-15 & GTZZ-15J



---

© Copyright by Hunan Sinoboom Heavy Industry Co.,Ltd.

The Third edition: April, 2011

## CONTENT

1. Chassis Assembly.....	1
1.1 Back Crura Fixed .....	3
1.2 Back Crura Fixed .....	5
1.3 Hub Assembly Installation.....	9
2. Turntable.....	11
2-1 Turntable .....	11
2-2 Weight.....	13
2-3 Fuel Tank.....	15
2-4 Right Hood Installation.....	17
2-5 Bearing Installation .....	19
2-6 Turntable Control Box .....	21
2-7 Hydraulic Tank.....	23
2-8 Cool System.....	25
2-9 Muffler.....	27
2-10 Engine.....	29
3. Boom.....	31
3.1 Connecting Rod .....	31
3.2 Base Boom And Link Span.....	34
3.3 Base Boom And Telescopic Boom .....	36
3.4 Towline.....	38
3.5 Arm Breaker.....	40
4. Platform .....	42
5. Hydraulic.....	47
5.1 Hydraulic Schematic: (GTBZ15 2WD) .....	47
5.2 Hydraulic Valve : .....	51
5.2.1 ST0629-A000 Drive Valve.....	51
5.2.2 ST1057-AC00 Choose Mode Valve.....	53
5.2.3 ST1083-AB00 Function Manifold.....	54
5.2.4 ST0887-A000 Unilateralist Counterbalance Valve .....	56
5.2.5 ST0883-A000 Unilateralist Counterbalance Valve .....	57
5.2.6 ST1084-AB00 Flex Counterbalance Valve.....	58
5.2.7 ST1530-AB00 .....	59
5.3 Hydraulic Pipe Schematic .....	60
5.4 Hydraulic Pipe Schematic(Drive).....	66
6. Eelectrical Schematic.....	68
7 Nameplate .....	70

1. Chassis Assembly

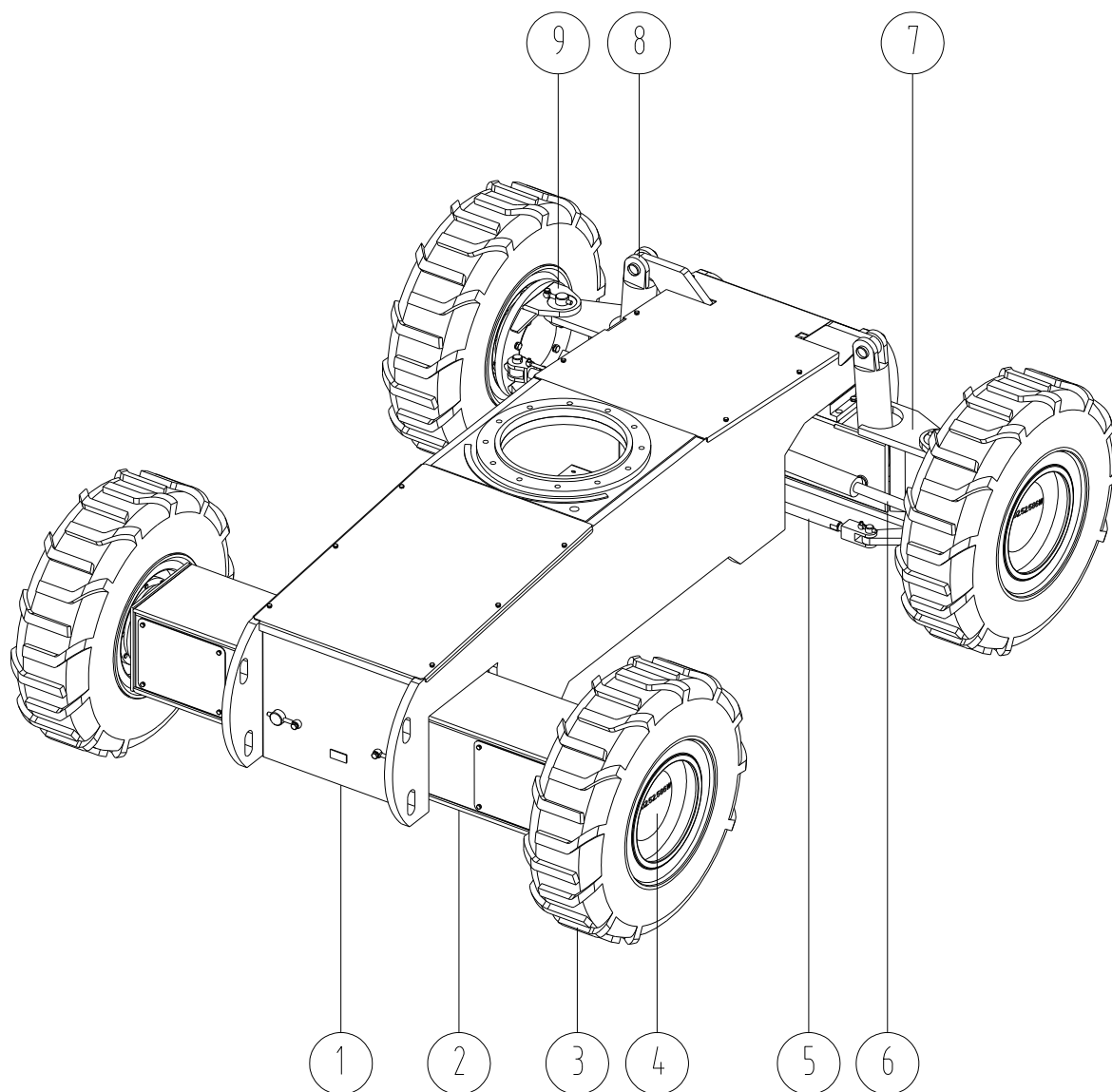


Fig 1-1

## Drive Chassis

### For GTZZ15

Item	Part Number	Qty	Description	Memo
1	7150-280040-0001	1	Chassis	
2	7150-281060-0000	1	Back Crura Fixed	
3	5126003	4	Solid Tire 300-15/8.0	
	5526013	4	Solid Tire 33*12-20	
	5526019	4	Foam Tire 12-16.5	
4	3404013	4	Torque Hub	
5	7150-280100-0001	1	Tie-Rod	
6	7150-520000-0001	2	Steer Cylinder	
7	7150-280080-0001	1	Front Crura Fixed	
8	7150-560000-0001	2	Oscillate Cylinder	
9	7150-281020-0000	1	Yoke Assembly-Left	
	7150-281040-0000	1	Yoke Assembly-Right	

Chart 1-1

### For GTZZ15J

Item	Part Number	Qty	Description	Memo
1	7150-280040-0001	1	Chassis	
2	7150J-282020-0000	1	Back Crura Fixed	
3	5126003	4	Solid Tire 300-15/8.0	
	5526013	4	Solid Tire 33*12-20	
	5526019	4	Foam Tire 12-16.5	
4	3404011	4	Torque Hub	3404017
5	7150-280100-0001	1	Tie-Rod	
6	7150-520000-0001	2	Steer Cylinder	
7	7150-280080-0001	1	Front Crura Fixed	
8	7150-560000-0001	2	Oscillate Cylinder	
9	7150-281020-0000	1	Yoke Assembly-Left	
	7150-281040-0000	1	Yoke Assembly-Right	

1.1 Back Crura Fixed

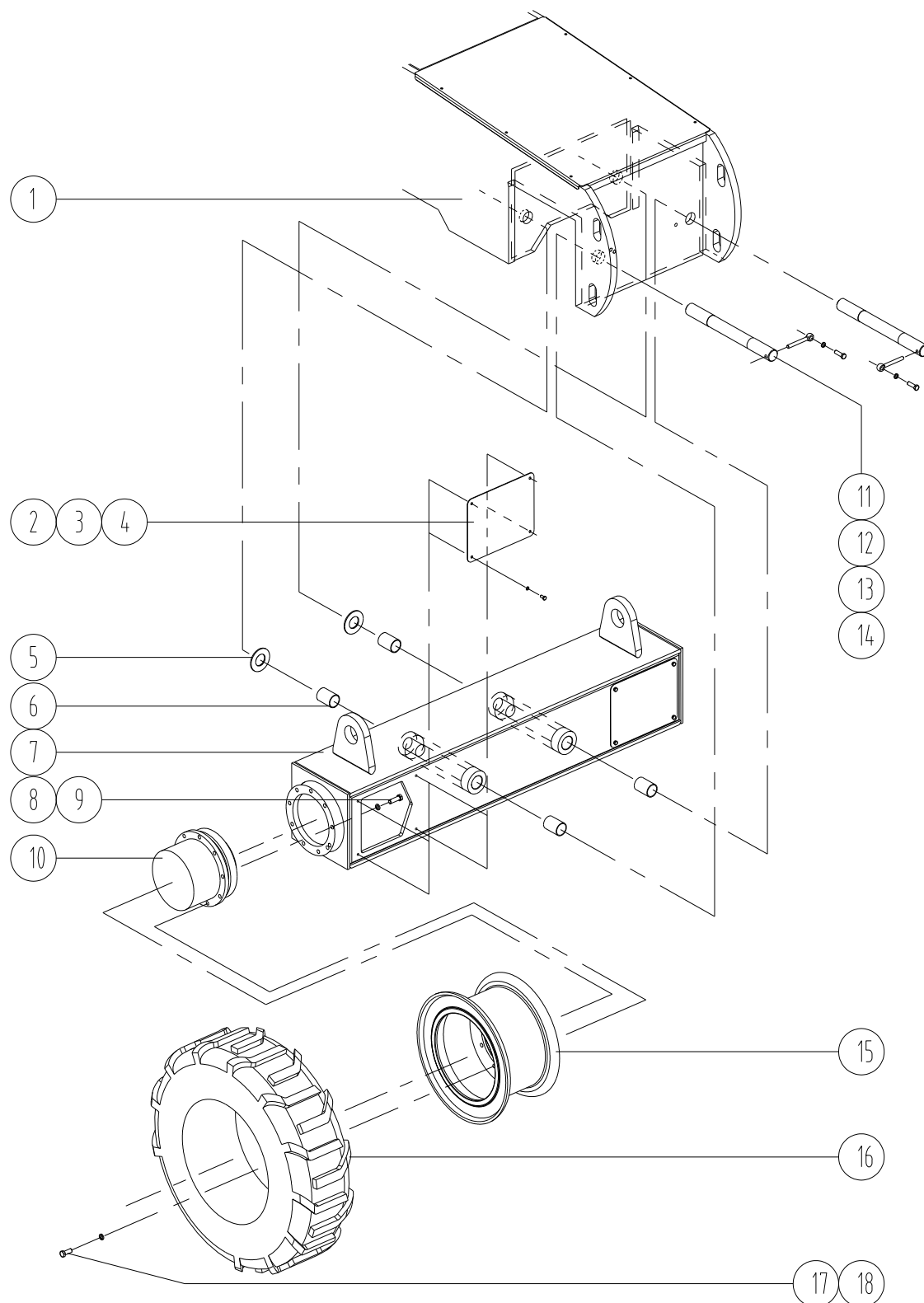


Fig 1-2

## Drive Chassis

Item	Part Number	Qty	Description	Memo
1	7150-280040-0001	1	Chassis	
2	8250-280000-1140	4	Cover	
3	4501005	38	Lock Washer 8	
4	4110009	32	Bolt M8*16-8.8	
5	7150-280000-1150	2	Washer	
6	5102019	4	Bearing 45*50*70	
7	7150J-281060-0000	1	Back Crura Fixed	GTZZ15J
7	7150J-282020-0000	1		GTZZ15J
7	7150-280060-0001	1		GTZZ15
7	7150-281060-0000	1		GTZZ15
7	7150-282060-0000	1		GTZZ15
8	4152053	36	Screw 0.625-11UNC*3.25inches	
9	4501008	72	Lock Washer 16	
10	3404013	4	Torque Hub	4WD
	3404026	4	Torque Hub	4WD
	3404017	2	Torque Hub	2WD
	3404011	2	Torque Hub	2WD
11	7150-280000-1010	2	Pivot-Pin	
12	8300-280000-1120	6	Rod End	
13	4501006	6	Lock Washer 10	
14	4110018	6	Bolt M10*30-8.8	
16	5526019	4	Foam Tire 12-16.5	
	5526013	4	Solid Tire 33*12-20	
	5526011	4	Solid Tire 300-15/8.0	
17	4501008	72	Lock Washer 14	
18	4110026	36	Bolt M14*35-8.8	

Chart 1-2

1.2 Back Crura Fixed

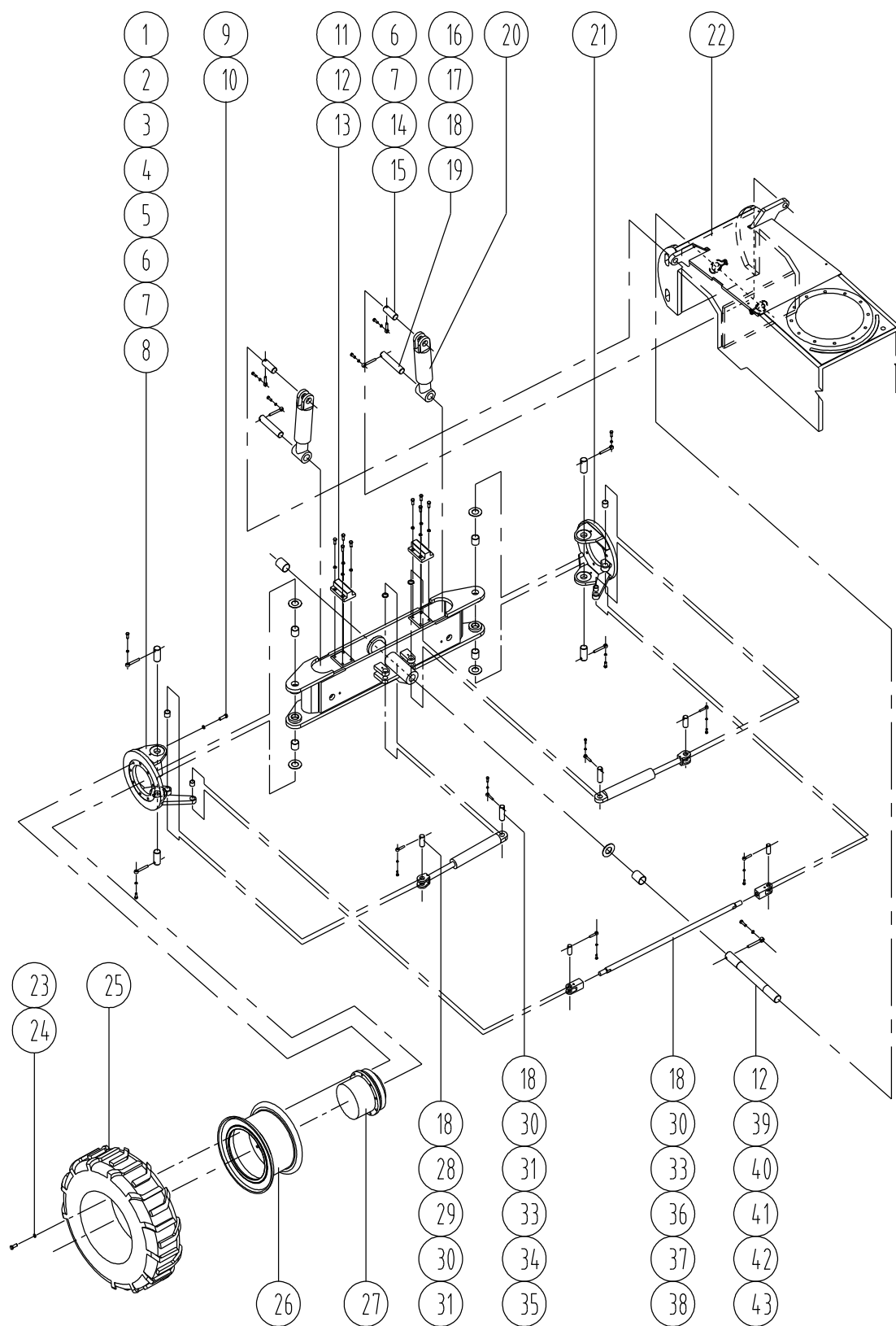


Fig 1-3

## Drive Chassis

Item	Part Number	Qty	Description	Memo
1	7150J-281020-0000	1	Yoke Assembly-Left	GTZZ15J
	7150J-280040-0000			GTZZ15J
	7150J-282040-0000			GTZZ15J
	7150-280140-0000			GTZZ15
	7150-281020-0000			GTZZ15
2	8250-280000-1080	2	Washer	
3	7150-281000-1010	4	Pivot Pin	
4	8250-280000-1130	2	Washer	
5	5102021	4	Bearing 40*45*45	
6	8300-280000-1120	6	Rod End	
7	4501006	6	Lock Washer 10	
8	4110018	6	Bolt M10*30-8.8	
9	4152053	36	Screw M14*90-10.9	
10	4501008	72	Lock Washer 14	
11	4152022	8	Screw M12*30-10.9	
12	4501007	8	Lock Washer 12	
13	7150-280000-1130	2	Board	
14	7150-280000-1040	2	Pivot Pin	
15	8300-280000-1120	6	Rod End	
16	7150-280000-1050	2	Pivot Pin	
17	8300-280000-1060	2	Rod End	
18	4501005	38	Lock Washer 8	
19	4110009	32	Bolt M8*16-8.8	
20	7150-560000-0001	2	Oscillate Cylinder	
21	7150J-281040-0000	1	Yoke Assembly-Right	GTZZ15J
	7150J-280020-0000			GTZZ15J
	7150J-282060-0000			GTZZ15J
	7150-280120-0000			GTJJ15
	7150-281040-0000			GTZZ15
22	7150-280040-0001	1	Chassis	
23	4110026	36	Bolt M14*35-8.8	
24	4501008	72	Lock Washer 14	



## Drive Chassis

---

25	5526019	4	Foam Tire 12-16.5	
	5526013	4	Solid Tire 33*12-20	
	5526011	4	Solid Tire 300-15/8.0	

## Drive Chassis

---

Item	Part Number	Qty	Description	Memo
27	3404013	4	Torque Hub	4WD
	3404026	4	Torque Hub	4WD
	3404017	2	Torque Hub	2WD
	3404011	2	Torque Hub	2WD
28	8250-280000-1010	2	Pivot Pin	
29	5102001	2	Bearing 30*34*30	
30	7150-280000-1120	2	Rod End	
31	4110011	14	Bolt M8*25-8.8	
32	8250-280000-1180	2	Pivot Pin	
33	8250-280000-1190	4	Cover	
34	8250-280000-1020	4	Rod End	
35	7150-520000-0001	2	Steer Cylinder	
36	7150-280100-0001	1	Tie-Rod	
37	7150-280000-1030	2	Pivot Pin	
38	5102020	2	Bearing 25*29*25	
39	7150-280000-1020	1	Pivot Pin	
40	7150-280000-1140	1	Washer	
41	5102006	2	Bearing 50*55*70	
42	8300-470000-1160	3	Rod End	
43	4110025	3	Bolt M12*40-8.8	

Chart 1-3

1.3 Hub Assembly Installation

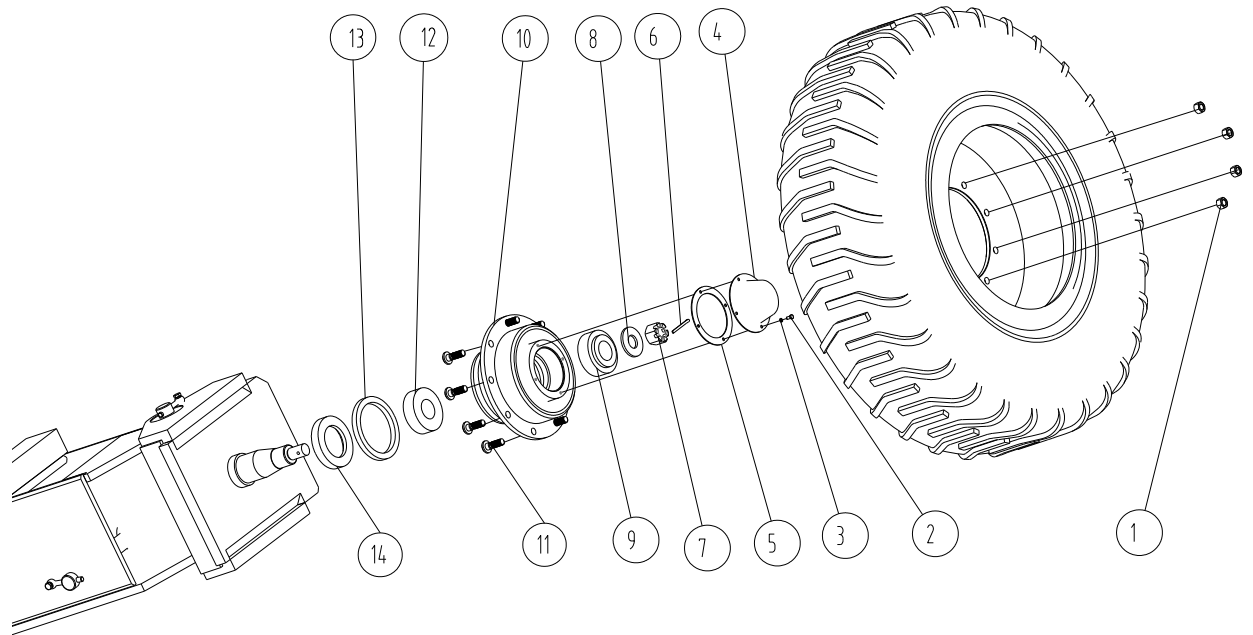


Fig 1-4

## Drive Chassis

---

For 7150-280000-0001 (2WD) & 7150J-280000-0000 (2WD)

Item	Part Number	Qty	Description	Memo
1	4309002	18	Nut M16*1.5-10	
2	4110004	8	Bolt M6*12-8.8	
3	4501004	8	Lock Washer 6	
4	8250-280000-1100	2	Cover	
5	8250-280000-1110	2	Airproof	
6	4701007	2	Pin 6.3*65	
7	4328002	2	Nut M30*2	
8	8250-280000-1230	2	Washer	
9	5115001	2	Bearing32310	
10	8200-280000-1060	2	Hub Assembly	
11	7150-280000-1080	18	Bolt	
12	5115002	2	Bearing 32314	
13	5305001	2	Oil Envnlp B130160	
14	8250-280000-1120	2	Block Ring	

Chart 1-4

# Turntable

## 2. Turntable

### 2-1 Turntable

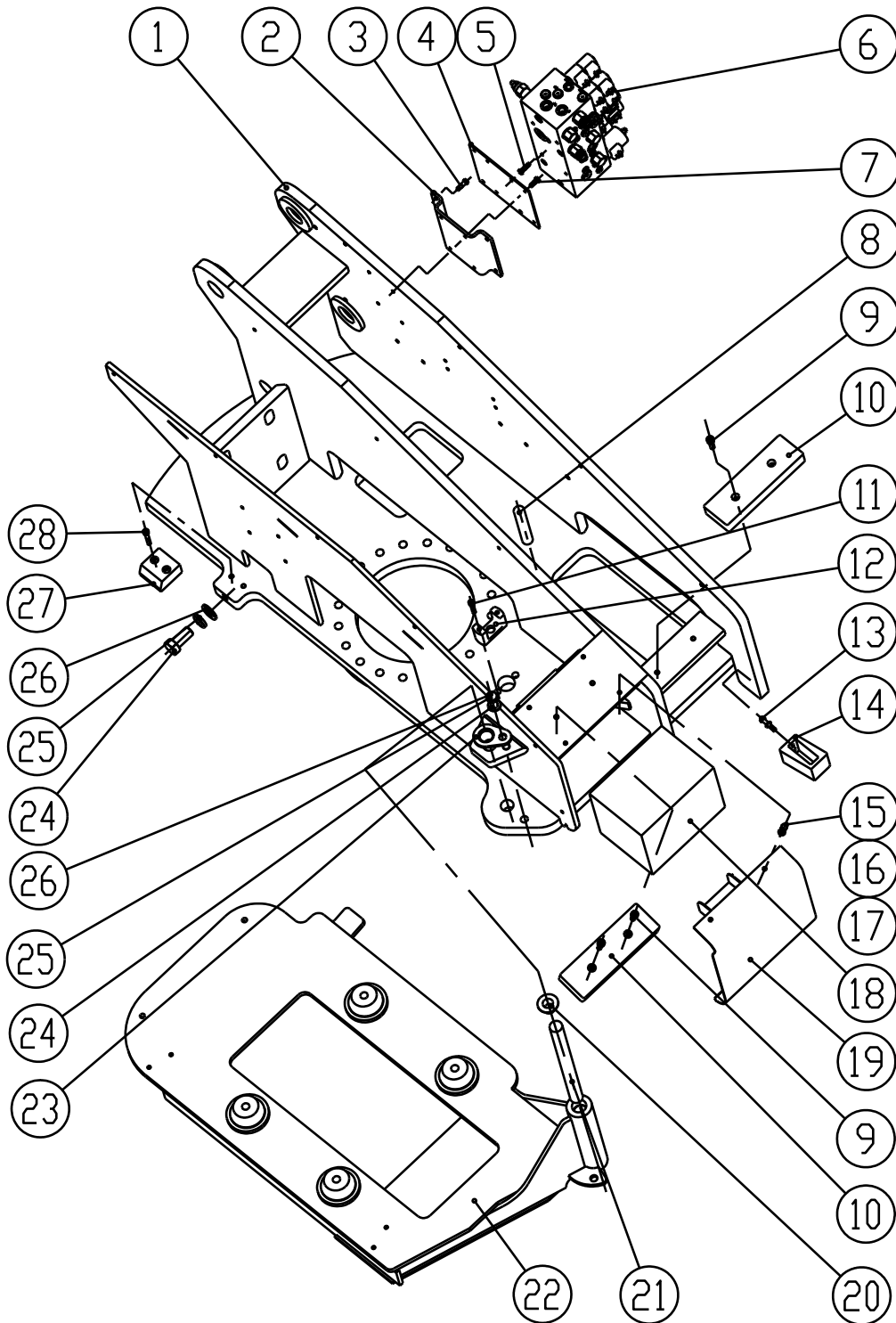


Fig 2-1

## Turntable

Item	Part Number	Qty	Description	Memo
1	7150-300000-0001	1	Turntable	
2	7150-470000-1060	1	Valve Bracket	
3	4110009	4	Bolt M8*16-8	
4	7150-470000-1070	1	Board	
5	4110010	4	Bolt M8*20-8	
6	6202049	1	Valve	
7	4110011	4	Bolt M8*25-8	
8	7150-470000-1020	1	Safety Pin	
9	4152017	2	Bolt M10*30-8	
10	7150-470000-1050	2	Block	
11	4152008	4	Bolt M8*25-8	
12	7150-470000-1030	1	Fixing Seat	
13	4110012	2	Bolt M8*30-8	
14	7150-470000-1011	1	Block	
15	4110013	2	Bolt M8*35-8	
16	4501005	12	Lock Washer 8	
17	4504004	12	Flat Washer 8	
18	3401002	1	Accumulator	
19	7150-470040-0000	1	Cover Of Box	
20	5102022	2	Bearing 30*34*26	
21	7150-470080-1020	1	Pivot Pin	
22	7150-470020-0001	1	Engine Seat	
23	7150-470080-1011	1	Board	
24	4501005	2	Block Washer 16	
25	4504004	2	Flat Washer 8	
26	4110028	2	Bolt M16*40-8	
27	7150-470000-1040	1	Slide Board	
28	4152042	2	Bolt M8*30-8	

Chart 2-1

# Turntable

## 2-2 Weight

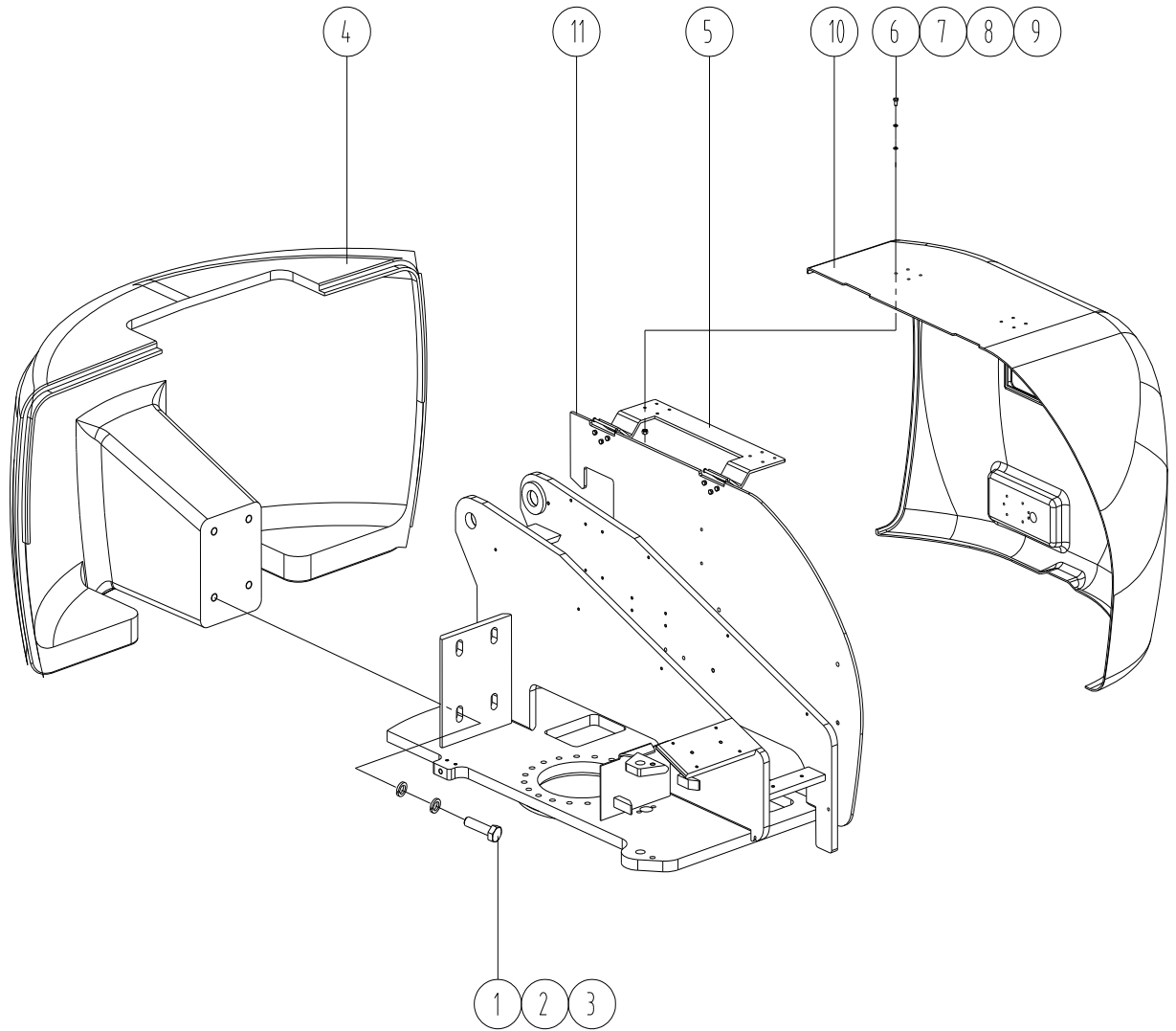


Fig 2-2

## Turntable

Item	Part Number	Qty	Description	Memo
1	4109019	4	Bolt M24*90-8	
2	4533002	4	Block Washer 24	
3	4501012	4	Flat Washer 24	
4	7150-400000-1011	1	Weight	
5	7150-310040-0002	1	Hood Bracket-Left	
6	4110012	24	Bolt M8*30-8	
7	4504004	24	Block Washer 8	
8	4501005	24	Flat Washer 8	
9	4308005	24	Nut M8-8	
10	7150-310000-1021	1	Left Hood	
11	7150-310000-1051	1	Left Block	

Chart 2-2



# Turntable

## 2-3 Fuel Tank

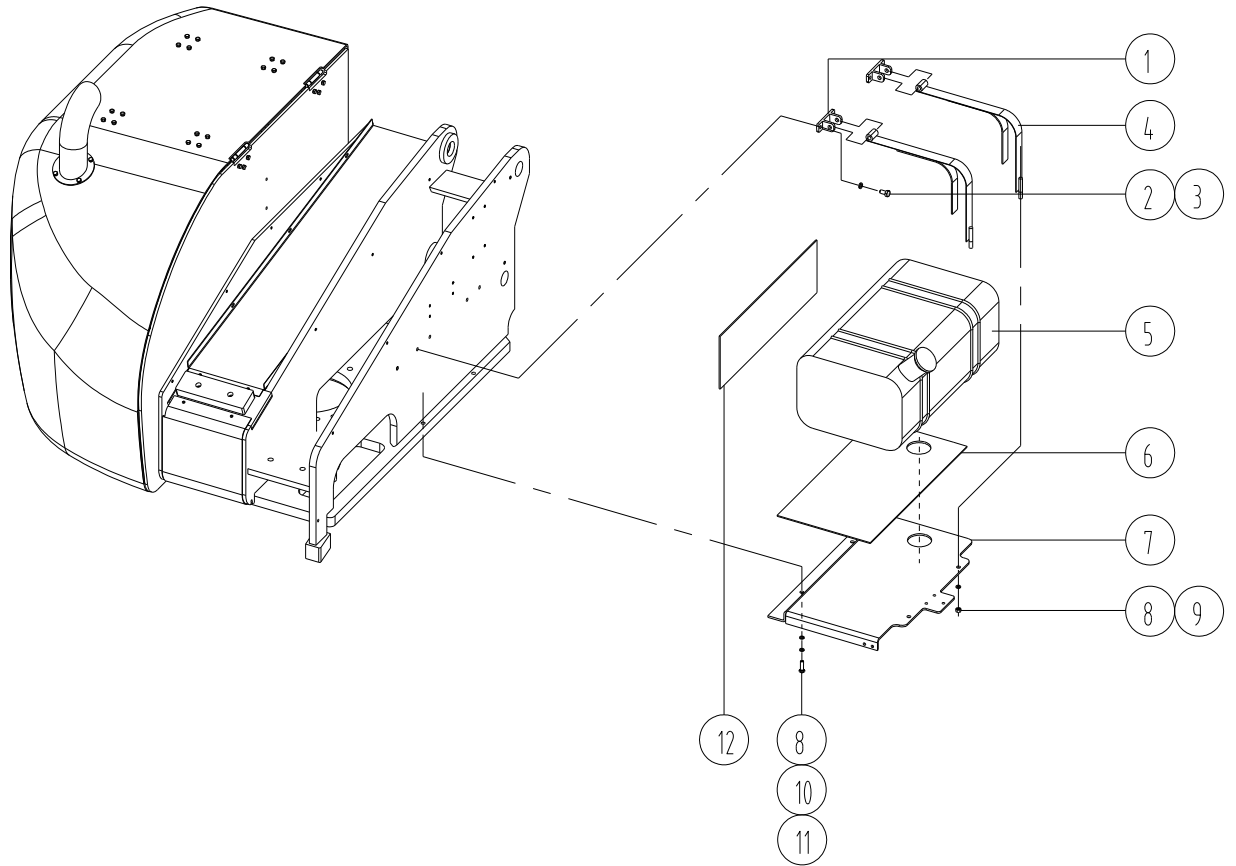


Fig 2-3

## Turntable

Item	Part Number	Qty	Description	Memo
1	7150-370060-0000	2	Bracket	
2	4501006	4	Block Washer 10	
3	4110018	4	Bolt M10*30-8	
4	7150-370020-0002	2	Installation Belt	
5	7150-370040-0002	1	Fuel Tank	
6	7150-370000-1021	1	Rubber Cushion	
7	7150-370000-1031	1	Fuel Tank Backstop	
8	4501007	4	Block Washer 12	
9	4308007	2	Nut M12-8	
10	4110023	2	Bolt M12*30-8.8	
11	4504006	2	Block Washer 12	
12	7150-370000-1041	1	Rubber Board	
13	4709014	2	Pin B12*70	
14	4701011	2	Pin 4*20	

Chart 2-3

# Turntable

## 2-4 Right Hood Installation

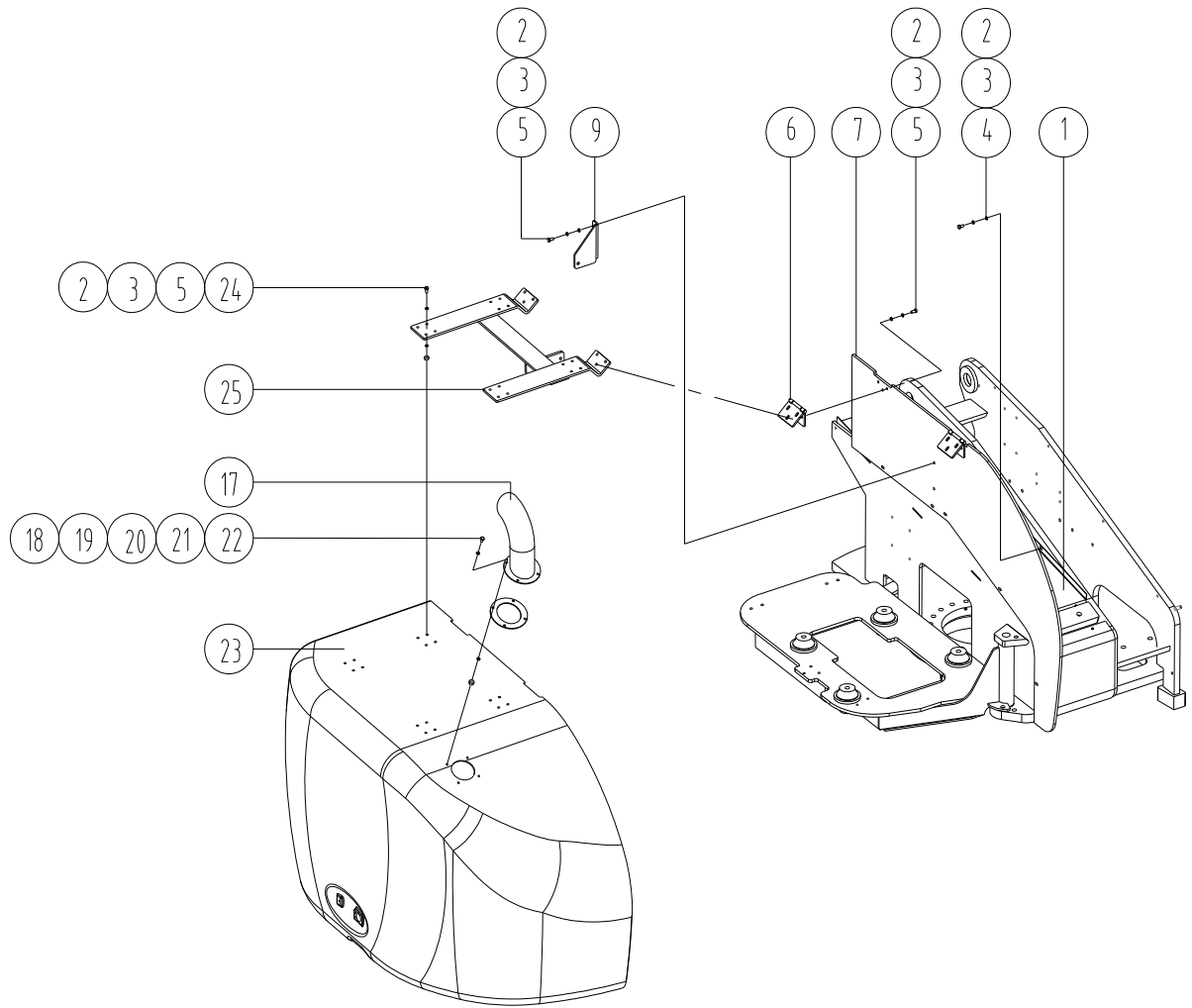


Fig 2-4

## Turntable

Item	Part Number	Qty	Description	Memo
1	7150-310000-1061	1	Dustproof Board	
2	4504004	35	Flat Washer 8	
3	4501005	35	Block Washer 8	
4	4110011	3	Bolt M8*25-8	
5	4110012	28	Bolt M8*30-8	
6	8300-310040-0001	4	Gemel	
7	7150-310000-1041	1	Right Board	
8	6602008	2	Gas Spring	
9	7150-310000-1121	2	Shelf	
10	4110010	4	Bolt M8*20-8	
11	4504006	2	Washer 10	
12	6605003	3	Pipe Jacket	
13	4504004	3	Washer 8	
14	4308006	7	Nut M10-8	
15	4110020	3	Bolt M10*35-8	
16	7150-310000-1071	2	Board	
17	7150-310080-0000	1	Cannulation	
18	7150-310000-1140	1	Board	
19	4110006	4	Bolt M6*20-8	
20	4504003	4	Washer 6	
21	4501004	4	Washer 6	
22	4308004	4	Nut M6-8	
23	7150-310000-1021	1	Left Hood	
24	4308005	32	Nut M8-8	
25	7150-310020-0002	1	Bracket	

Chart 2-4

# Turntable

## 2-5 Bearing Installation

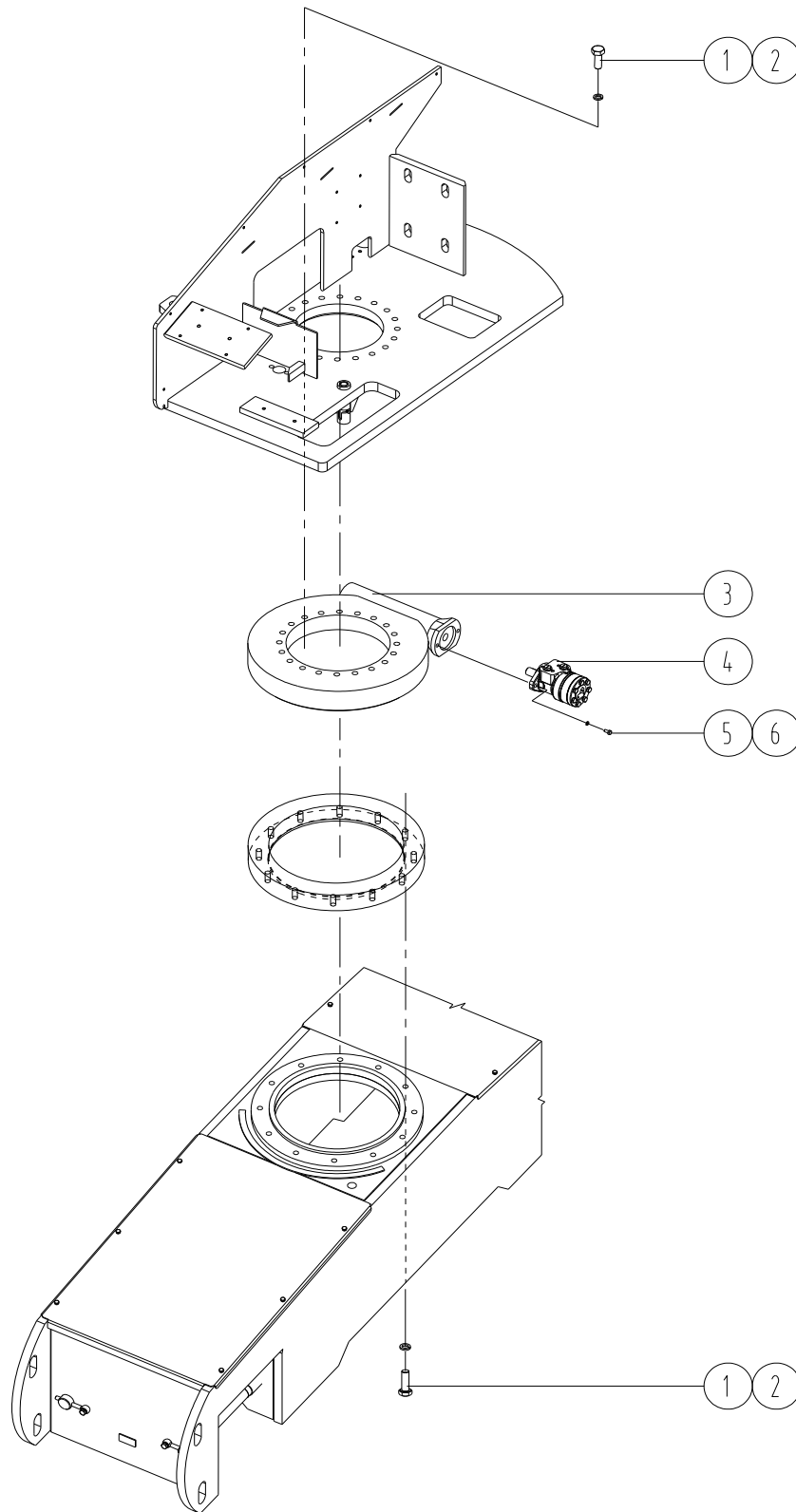


Fig 2-5

## Turntable

Item	Part Number	Qty	Description	Memo
1	4108001	32	Bolt M16*80-8	
2	4510001	32	Lock Washer 6	
3	6603004	1	Bearing	
4	6208009	1	Slew Motor	
5	4110024	2	Bolt M12*35-8	
6	4501007	2	Lock Washer 6	

Chart 2-5

# Turntable

## 2-6 Turntable Control Box

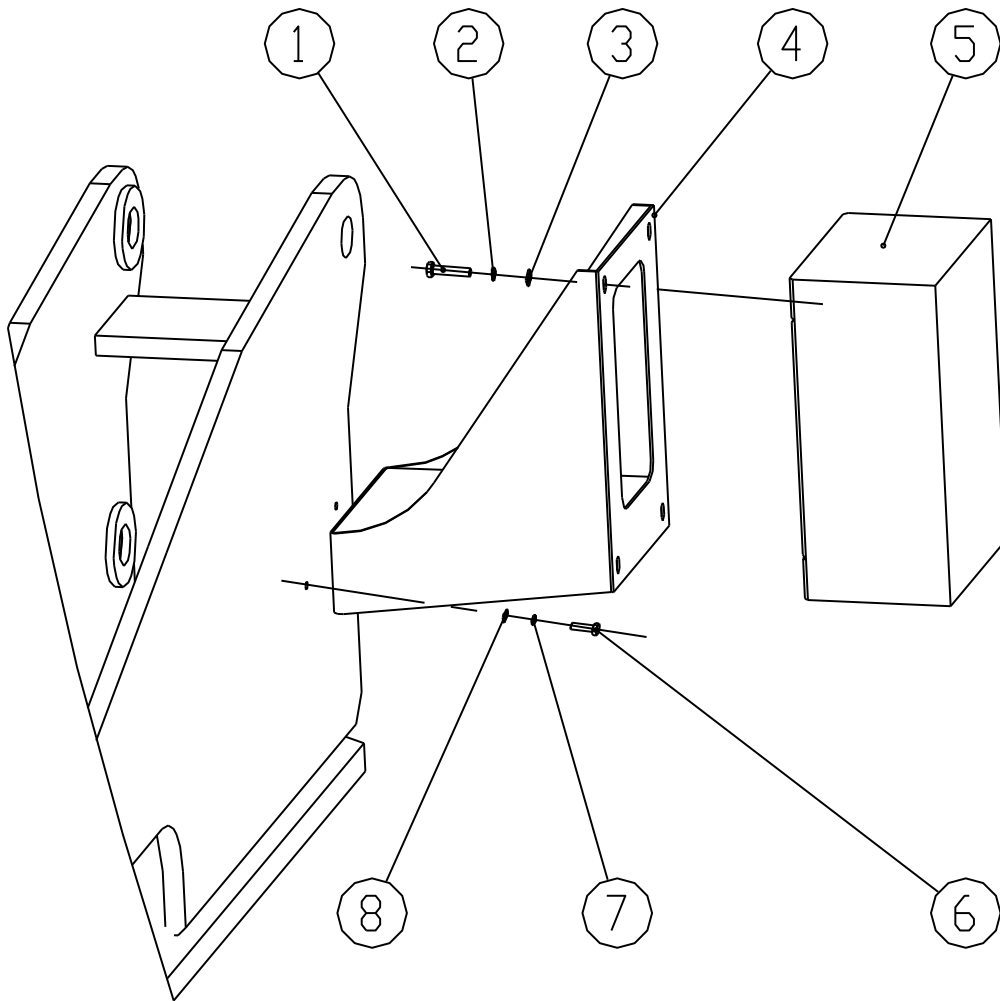


Fig 2-6

## Turntable

Item	Part Number	Qty	Description	Memo
1	4110018	4	Bolt M10×30-8	
2	4504005	4	Lock Washer 10	
3	4501006	4	Flat Washer 10	
4	7150-470060-0001	1	Bracket	
5	7150-620020-0001	1	Control Box	
6	4110011	4	bolt M8×25-8	
7	4504004	4	Lock Washer 8	
8	4501005	4	Flat Washer 8	

Chart 2-6



# Turntable

## 2-7 Hydraulic Tank

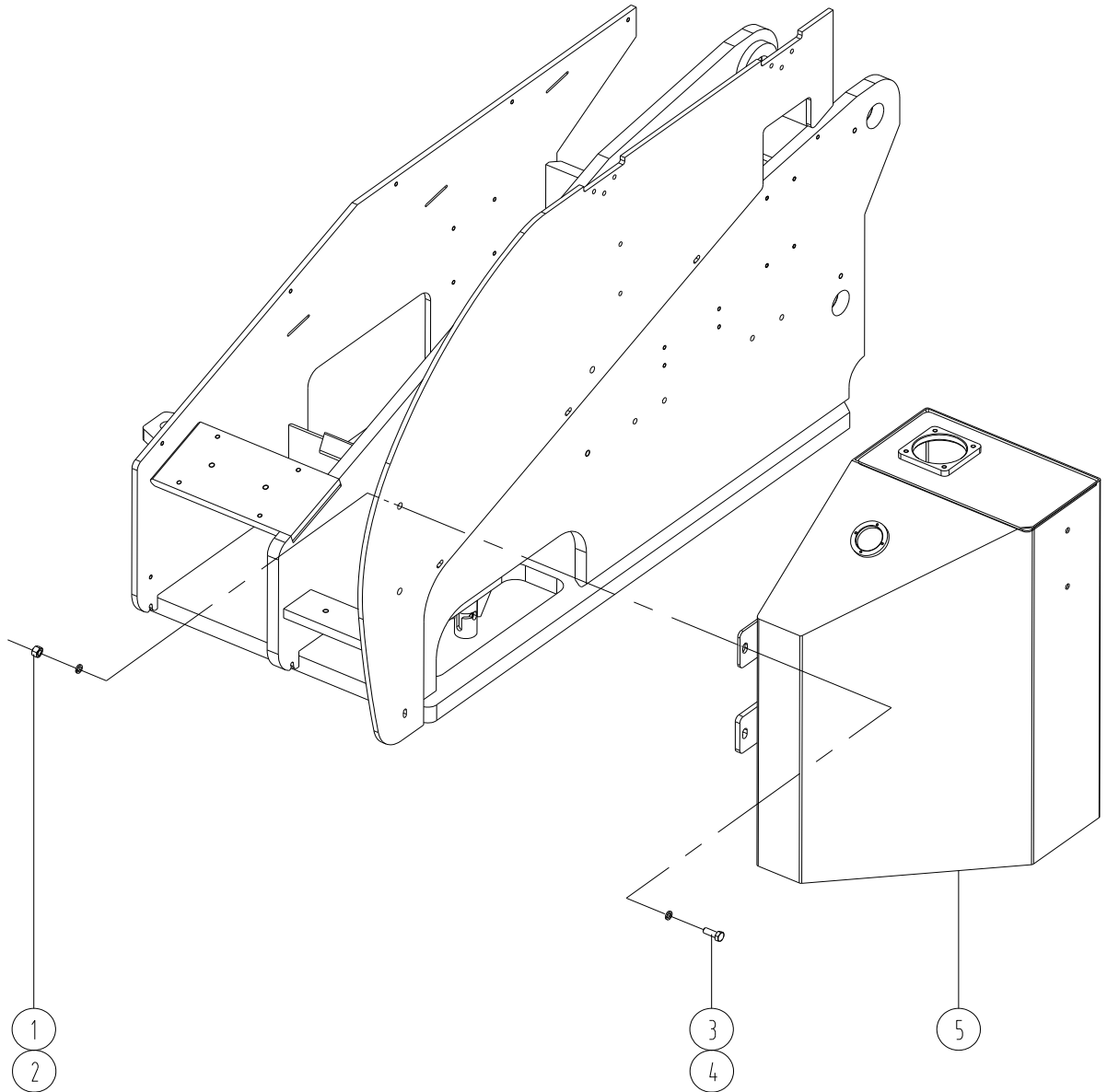


Fig 2-7

## Turntable

Item	Part Number	Qty	Description	Memo
1	4110025	4	bolt M12×40-8	
2	4504006	4	Lock Washer 12	
3	4501007	4	Flat Washer 12	
4	4308007	4	Nut M12-8	
5	7150-360000-0001	1	Hydraulic Tank	

Chart 2-7

# Turntable

## 2-8 Cool System

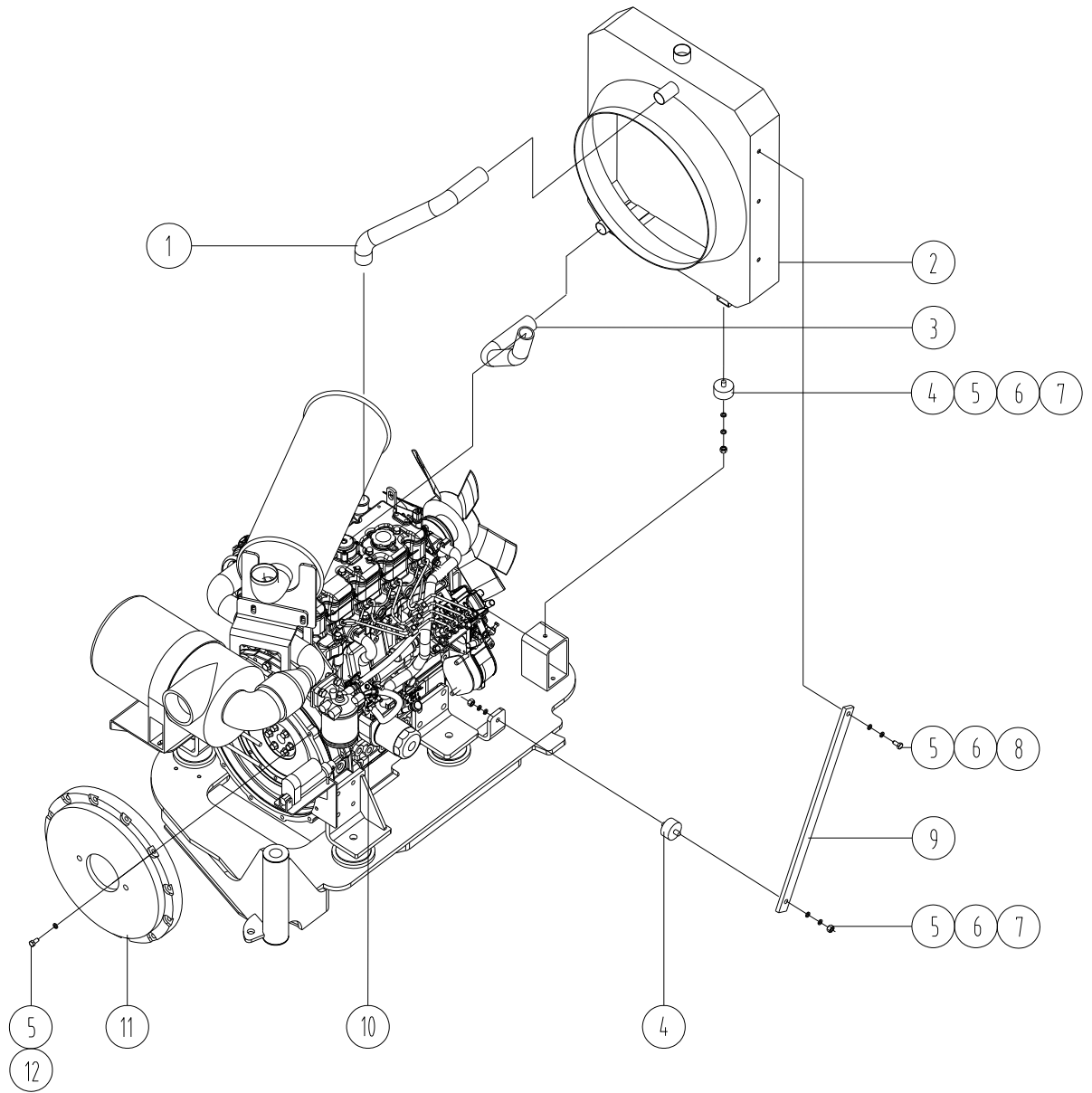


Fig 2-8

## Turntable

Item	Part Number	Qty	Description	Memo
1	7150-140000-1020	1	Hose	
2	3507004	1	Radiator	
3	7150-140000-1030	1	Hose	
4	6600006	4	Damping	
5	4501006	22	Lock Washer 10	
6	4504005	10	Flat Washer 10	
7	4308006	8	Nut M10-8	
8	4110016	2	Bolt M10×25	
9	7150-140000-1010	2	Radiator Support	
10	3403004	1	Engine	
11	7150-390000-1010	1	Flange Tray	
12	4110018	12	Bolt M10×30	

Chart 2-8

# Turntable

## 2-9 Muffler

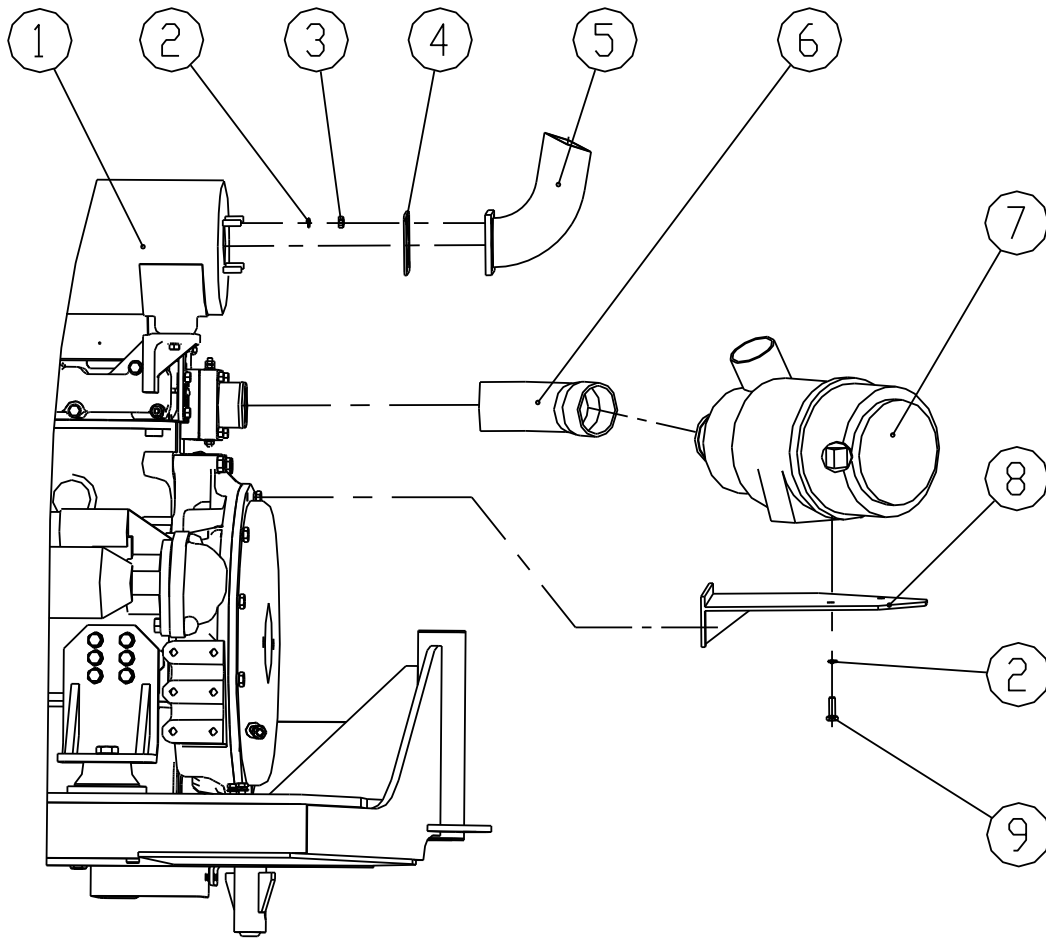


Fig 2-9

## Turntable

Item	Part Number	Qty	Description	Memo
1		1	Muffler	
2	4504004	6	Lock Washer 8	
3	4308005	4	Nut M8-8	
4	7150-130000-1010	1	Gasket	
5	7150-130020-0001	1	Exhaust Pipe	
6	7150-120000-1010	1	Admission Pipe	
7	6206007	1	Air Cleaner	
8	7150-120020-0000	1	Bracket	
9	4110010	2	Bolt M8*20-8.8	

Chart 2-9

# Turntable

## 2-10 Engine

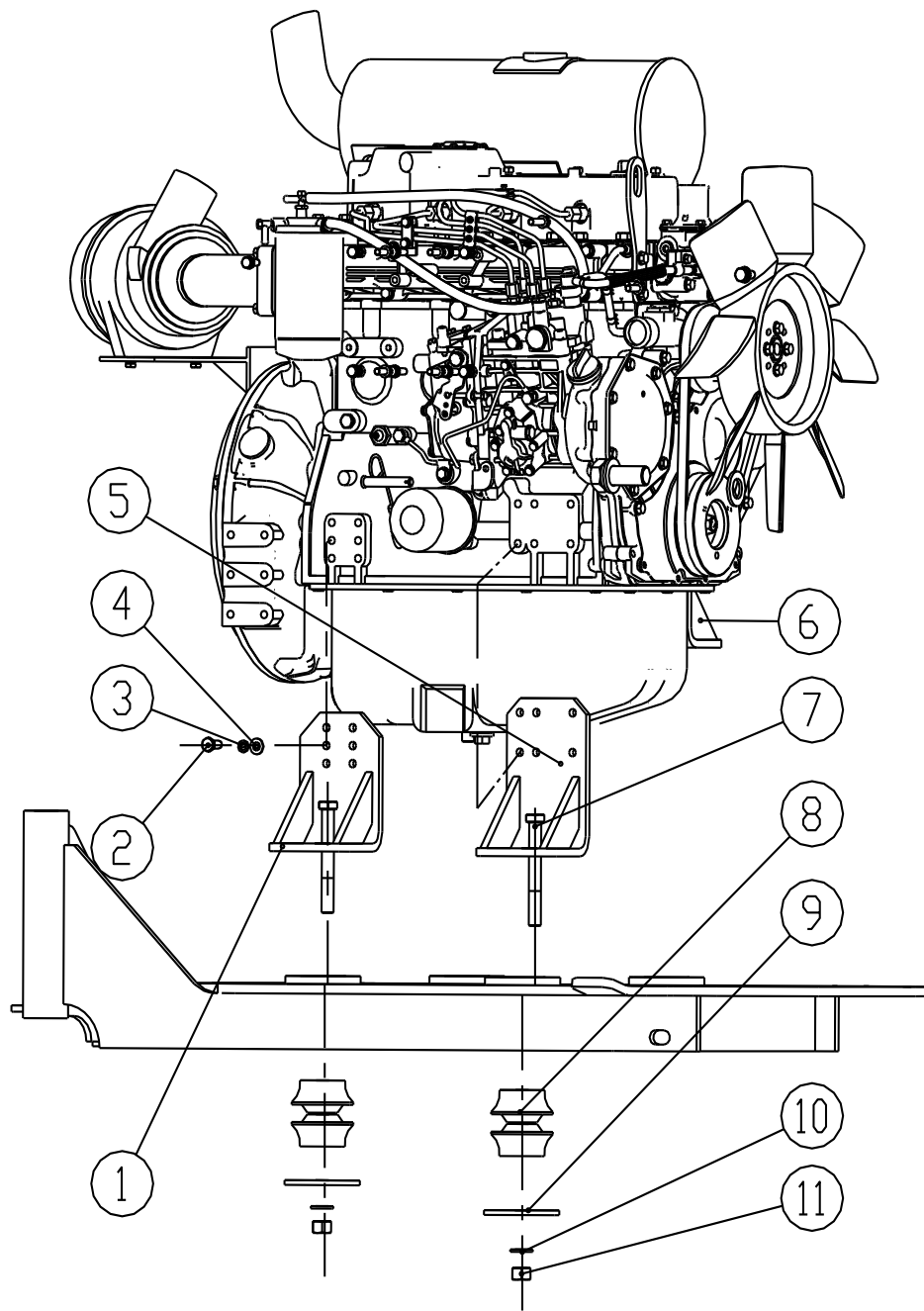


Fig 2-10

## Turntable

Item	Part Number	Qty	Description	Memo
1	7150-100020-0001	2	Bracket	
2	4110016	24	Bolt M10×25-8	
3	4501006	24	Lock Washer 10	
4	4504005	24	Flat Washer 10	
5	7150-100040-0001	1	Bracket	
6	7150-100060-0001	1	Bracket	
7	4109031	4	Bolt M16×130-8	
8	6600054	8	Damping Cushion	
9	7150-100000-1010	4	Board	
10	4504008	4	Lock Washer 16	
11	4308009	4	Nut M16-8	

Chart 2-10



## 3. Boom

### 3.1 Connecting Rod

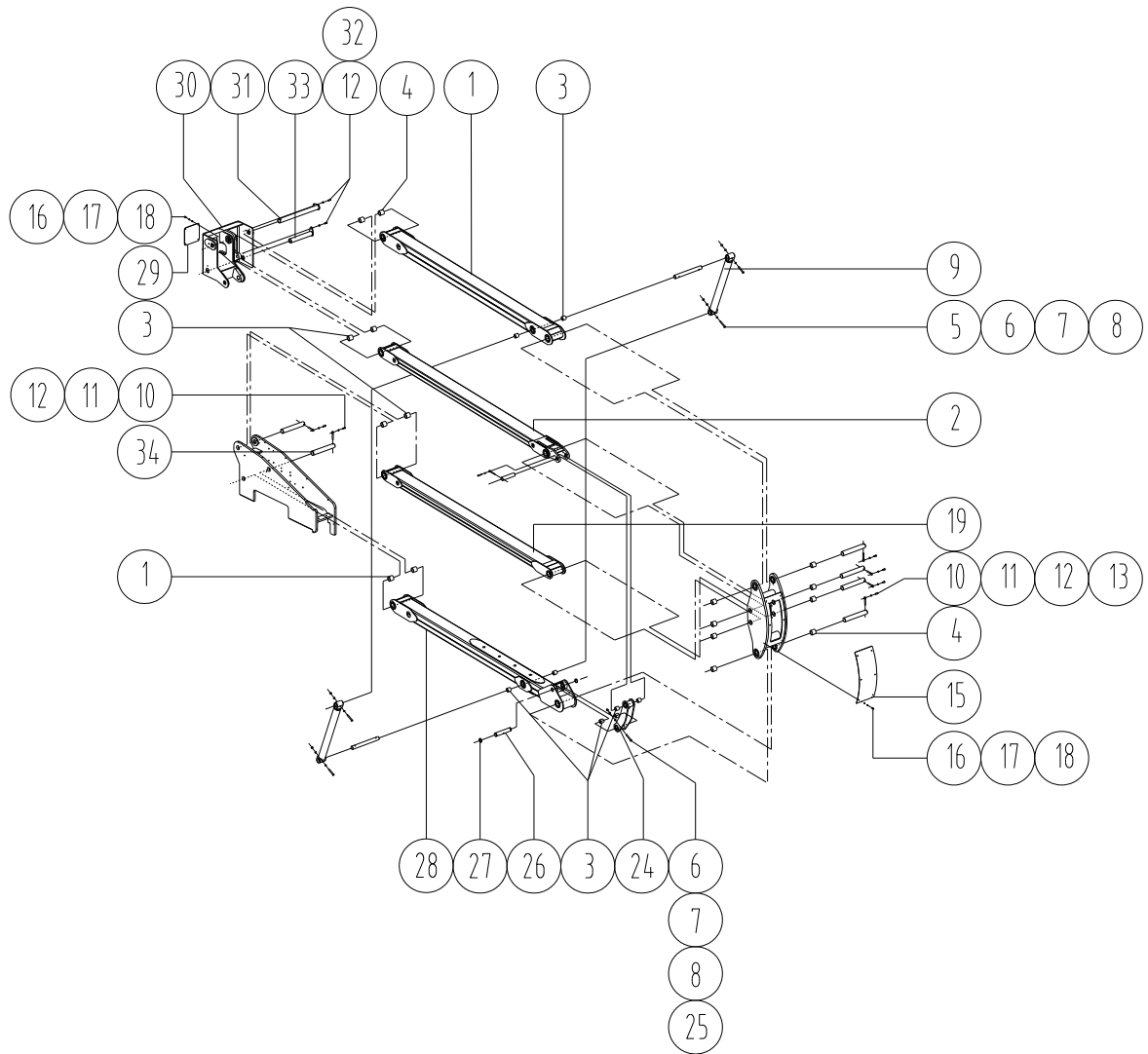


Fig 3-1 (1/1)

## BOOM

---

Item	Part Number	Qty	Description	Memo
1	7150-010100-0000	1	Upper Connection Rod1 (A)	
2	7150-010120-0000	1	Upper Connection Rod2 (A)	
3	5102009	8	Bearing 40*44*40	
4	5102018	16	Bearing 50*55*50	
5	4109022	4	Bolt M12*90-8.8	
6	4504006	10	Lock Washer 12	
7	4308007	5	Nut M12-8	
8	4310005	5	Nut M12-8	
9	7150-570000-0000	2	Underside Lift Cylinder	
10	8300-280000-1060	8	End Pin	
11	4109002	8	Bolt M10*45-8.8	
12	4501006	10	Lock Washer 10	
13	7150-010000-1010	4	Pivot Pin	
14	7150-010080-0000	1	Underside Link Span(B)	
15	7150-010000-1100	1	Board	
16	4110010	10	Bolt M8*20-8.8	
17	4501005	11	Lock Washer	
18	4504004	10	Flat Washe	
19	7150-010040-0000	1	Underside Link Span 2 (A)	
20	4110035	1	Bolt 8*45-8.8	

## BOOM

---

Item	Part Number	Qty	Description	Memo
21	7150-010000-1080	1	End Pin	
22	7150-010000-1020	1	Pin	
23	7150-010000-1070	2	Cushion	
24	7150-010060-0000	1	Tie Rod (B)	
25	4109023	1	Bolt M12*100-8.8	
26	7150-010000-1030	1	Pin	
27	4524003	2	Check Ring	
28	7150-010020-0000	1	Underside Tie Rod 1	
29	7150-010000-1090	1	Board	
30	7150-010140-0001	1	Upper Link Span	
31	7150-010180-0000	1	Pivot Pin	
32	4110016	1	Bolt M10*25-8.8	
33	7150-010160-0000	1	Pivot Pin	
34	7150-010000-1050	1	Pivot Pin	

Chart 3-1

# BOOM

## 3.2 Base Boom And Link Span

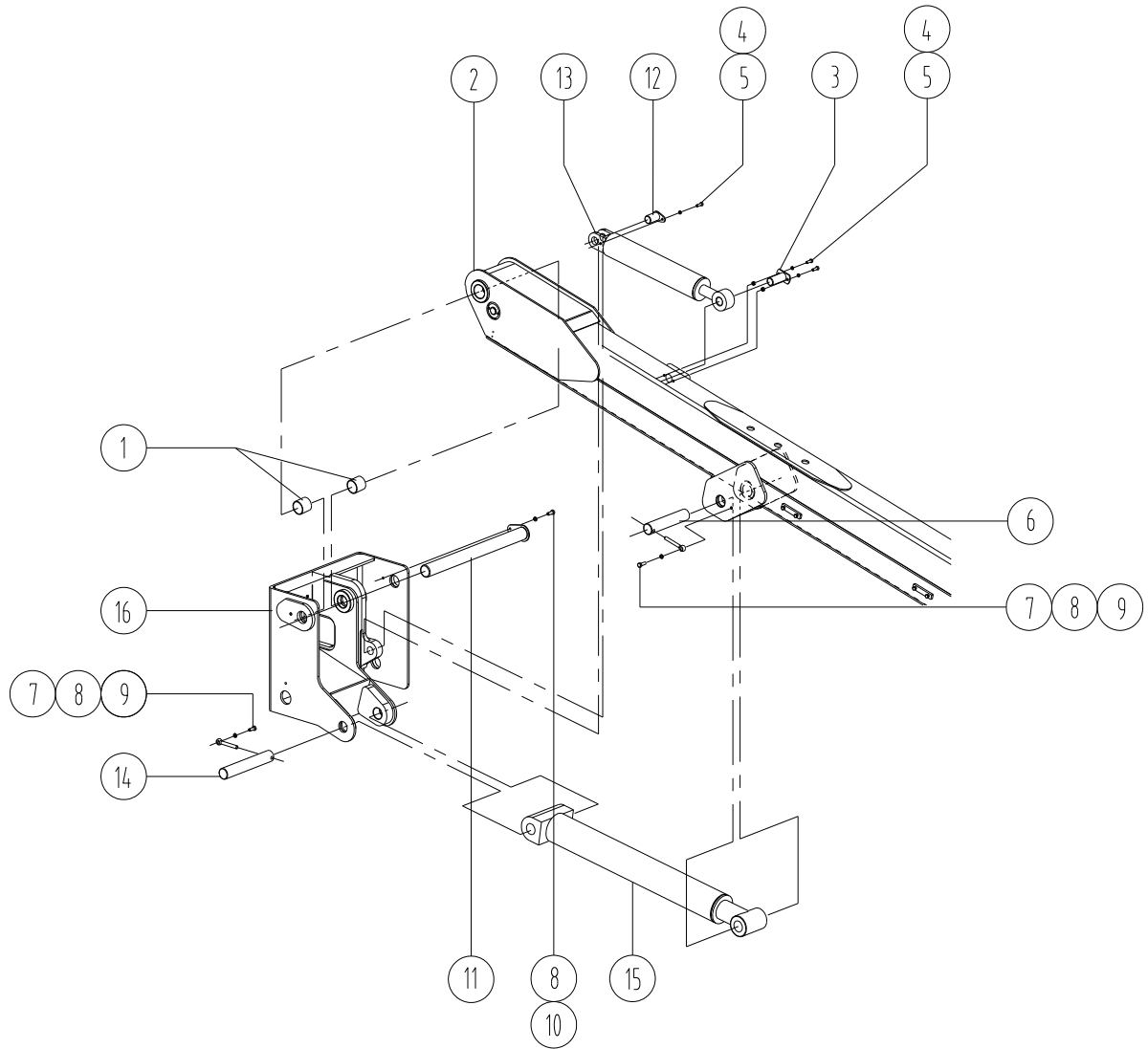


Fig 3-2

## BOOM

---

Item	Part Number	Qty	Description	Memo
1	5102018	2	Bearing	
2	7150-020000-0000	1	Base Boom (B)	
3	7150-800100-0000	1	Pivot Pin	
4	4110009	3	Bolt M8*16-8.8	
5	4501005	3	Lock Washer	
6	7150-800000-1010	1	Pivot Pin	
7	4110020	2	Bolt M10*35-8.8	
8	4501006	3	Lock Pin10	
9	8300-280000-1060	2	End pin	
10	4110016	1	Bolt M10*25-8.8	
11	7150-010180-0000	1	Pin	
12	7150-800120-0000	1	Pin	
13	7150-580000-0000	1	Underside Leveling Cylinder	
14	7150-800000-1040	1	Pivot Pin	
15	7150-530000-0000	1	Upper Lift Cylinder	
16	7150-010140-0001	1	Upper Tie Rod	

Chart 3-2

# BOOM

## 3.3 Base Boom And Telescopic Boom

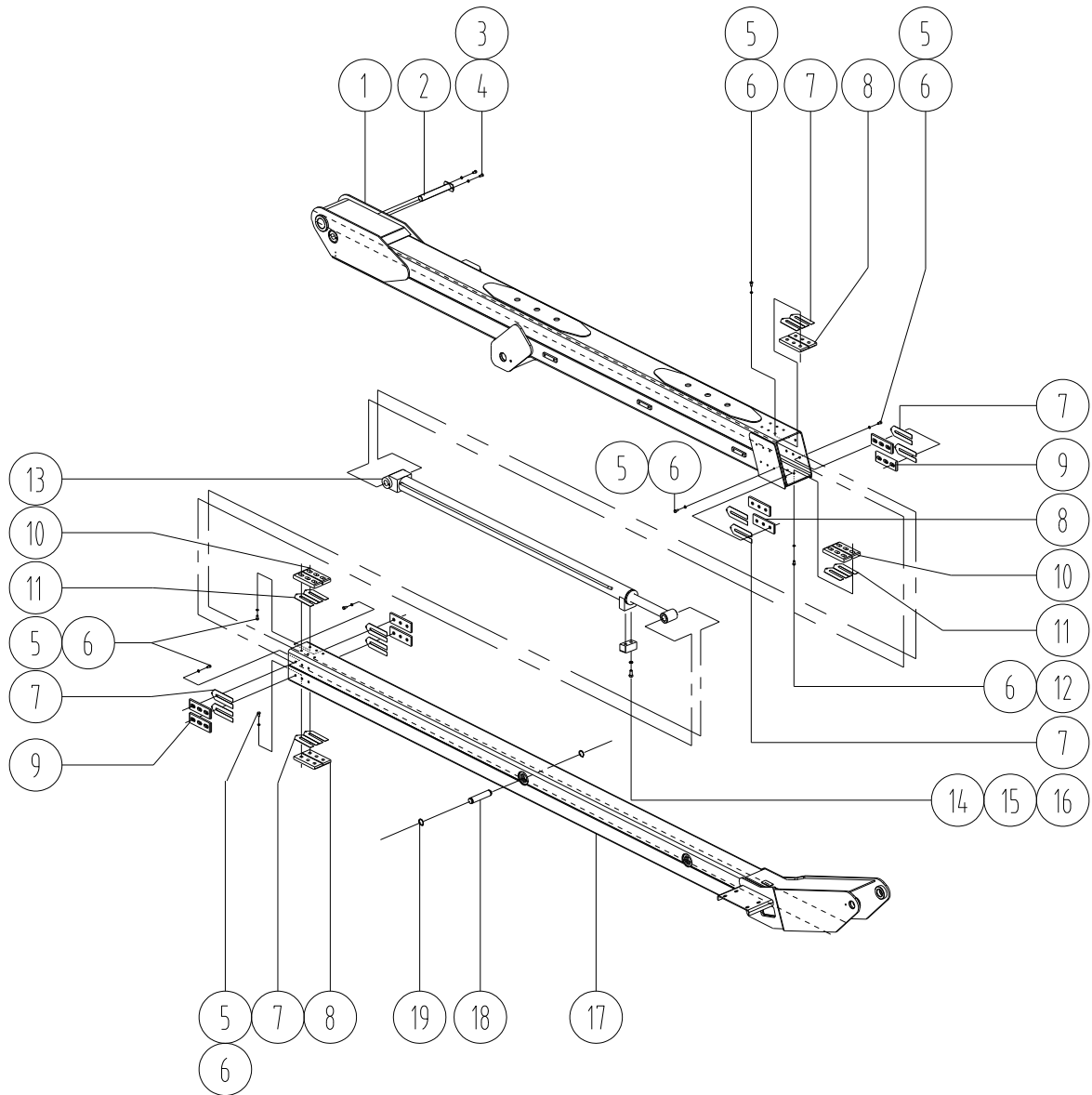


Fig 3-3

## BOOM

---

Item	Part Number	Qty	Description	Memo
1	7150-020000-0000	1	Base Boom(A)	
2	7150-800020-0000	1	Pivot Pin	
3	4110009	2	Bolt M8*16-8.8	
4	4501005	2	Lck Washer8	
5	4110014	42	Bolt M10*20-8.8	
6	4501006	48	Lock Washer10	
7	7150-800000-1050	12	Washer	
8	7150-800080-0000	4	Slide Board	
9	7150-800060-0000	8	Slide Board	
10	7150-800040-0000	4	Slide Board	
11	7150-800000-1060	4	Washer	
12	4110018	6	BoltM10*30-8.8	
13	7150-540000-0000	1	Extension Cylinder	
14	7150-800000-1080	1	Slide Board	
15	4152037	2	Screw 12*40-8.8	
16	4501007	2	Lock Washer12	
17	7150-030000-0000	1	Telescopic Boom (A)	
18	7150-800000-1020	1	Pivot Pin	
19	4524007	2	Check Ring	

Chart 3-3

# BOOM

## 3.4 Towline

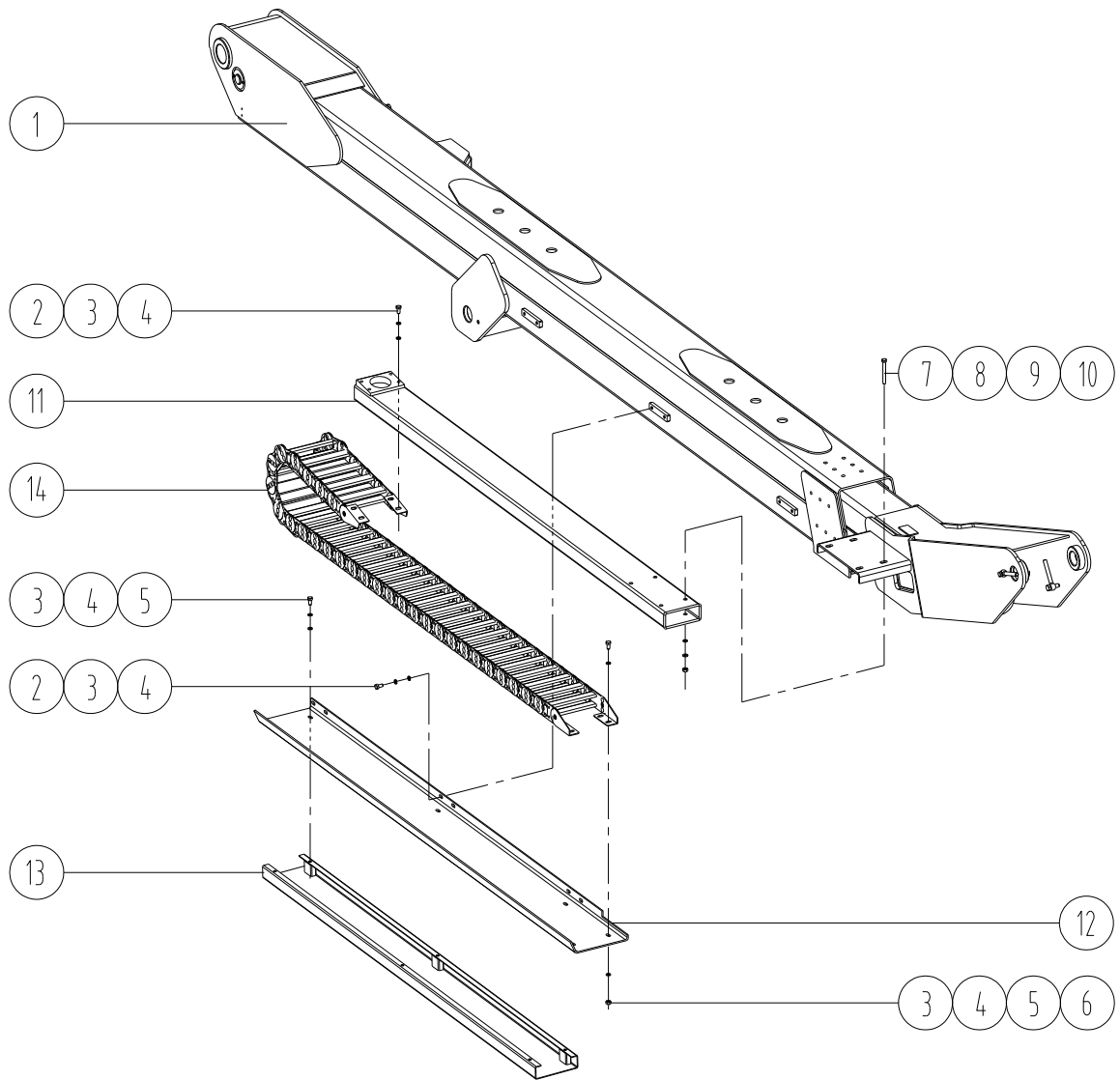


Fig3-4



## BOOM

---

Item	Part Number	Qty	Description	Memo
1	7150-020000-0000	1	Base Boom (A)	
2	4110009	10	Bolt M8*16-8.8	
3	4504004	20	Lock Washer 8	
4	4501005	20	Flat Washer 8	
5	4110011	8	Bolt M8*25-8.8	
6	4308005	4	Nut M8-8	
7	4109021	4	Bolt M10*80-8.8	
8	4504005	4	Lock Washer 10	
9	4501006	4	Flat Washer 10	
10	4308006	4	Nut M10-8	
11	7150-820020-0001	1	Conduit	
12	7150-820000-1011	1	Bracket	
13	7150-820040-0000	1	Tube Seat	
14	6601011	1	Towline	

Chart 3-4

# BOOM

## 3.5 Arm Breaker

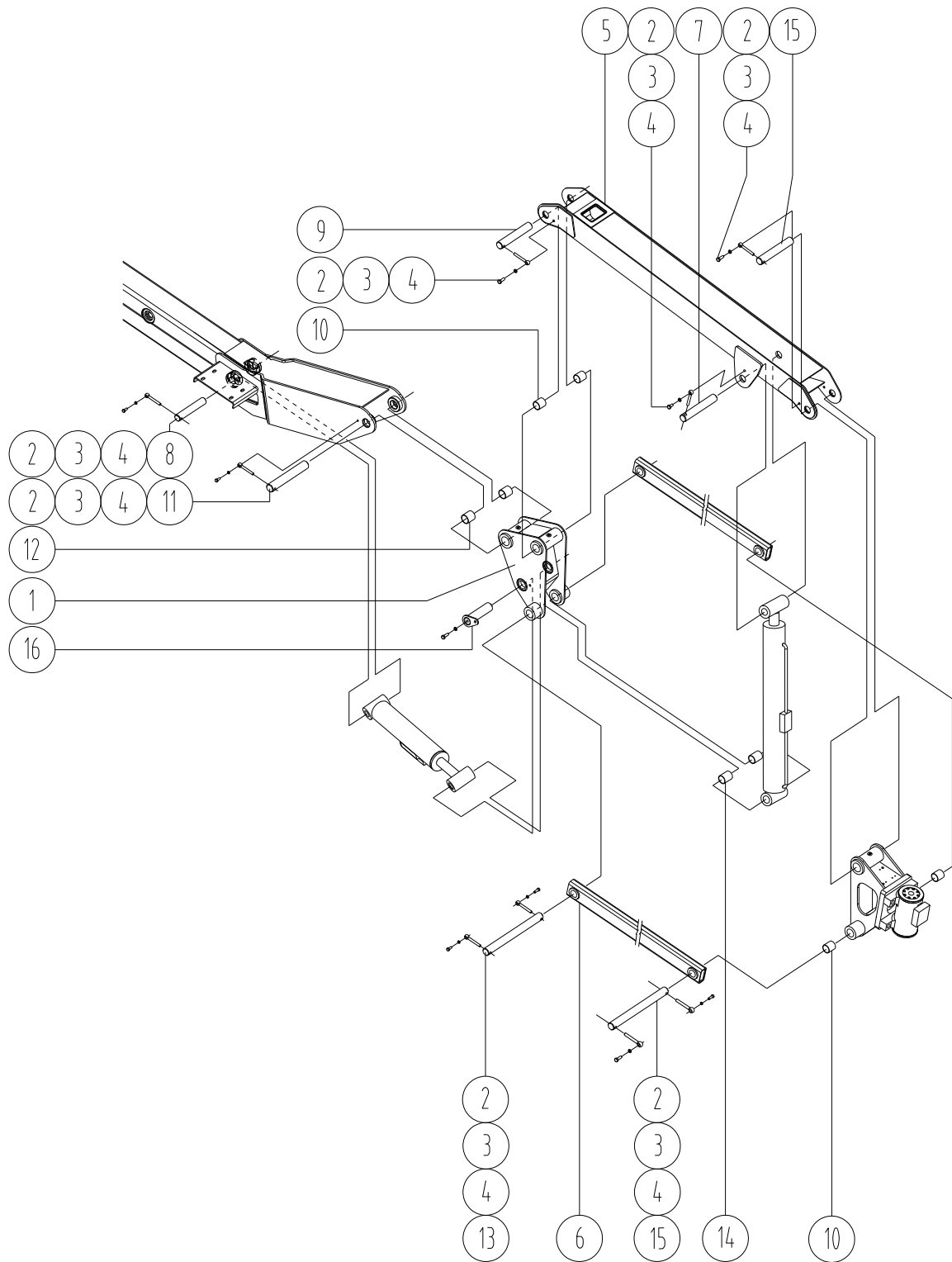


Fig3-5

## BOOM

---

Item	Part Number	Qty	Description	Memo
1	7150J-830020-0000	1	Connector	
2	8300-280000-1120	10	End Pin	
3	4110018	20	Bolt M10*30-8.8	
4	4501006	20	Lock Washer 10	
5	8270-830040-0002	8	Extension Boom	
6	8270-830060-0000	4	Leveling Boom	
7	8270-830000-1010	4	Pivot Pin	
8	7150-800000-1030	4	Pivot Pin	
9	8270-830000-1020	4	Pivot Pin	
10	5102015	4	Bearing	
11	7150-500000-1020	1	Pivot Pin	
12	5102013	1	Bearing	
13	8270-830000-1030	1	Pivot Pin	
14	5102016	1	Bearing	
15	8270-830000-1040	1	Pivot Pin	
16	8250-500080-0000	10	Pivot Pin	

Chart 3-5

## 4. Platform

GTZZ15J

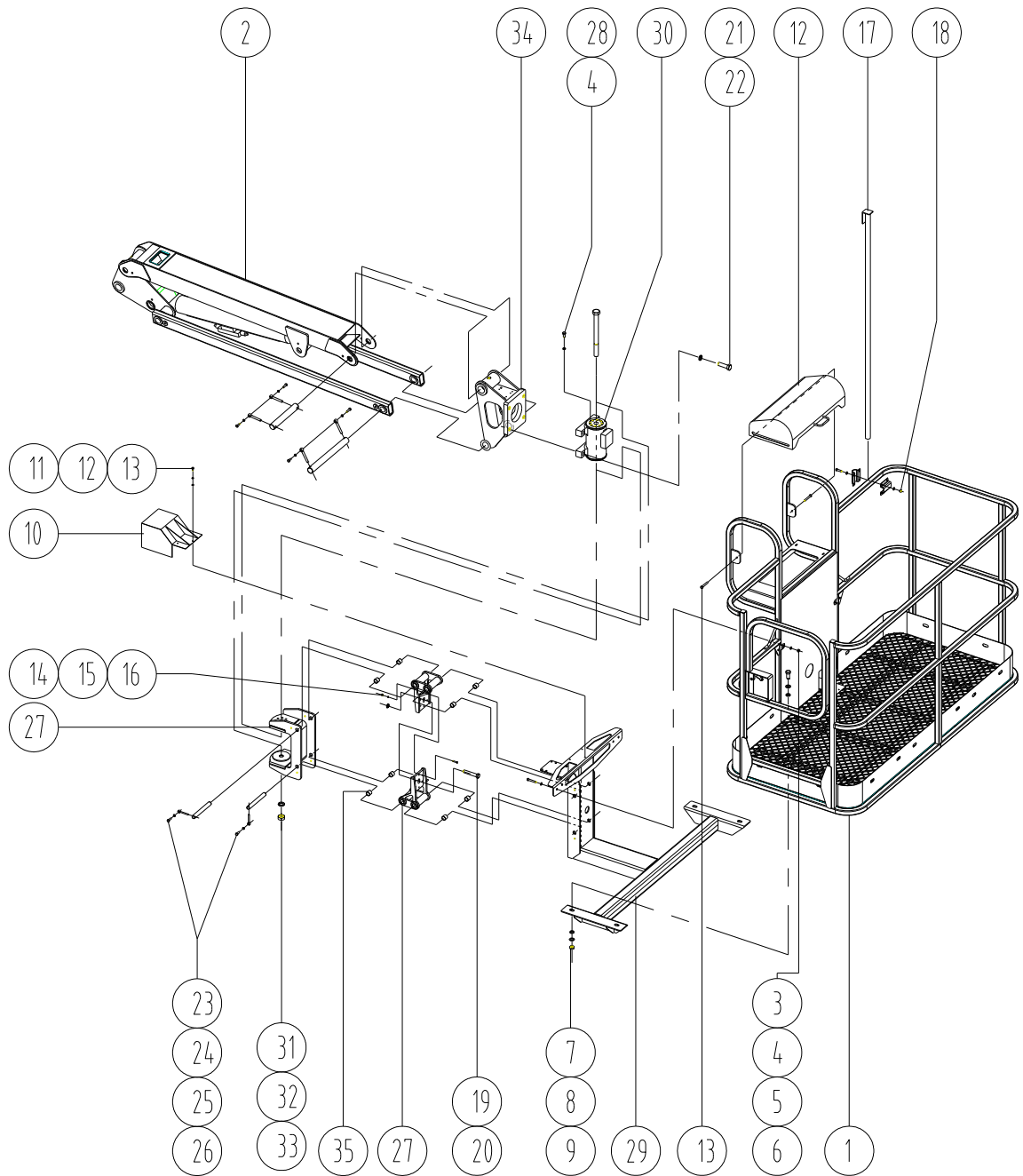


Fig 4-1

## BOOM

---

Item	Part Number	Qty	Description	Memo
1	8200-500020-0002	1	Platform	
2	7150J-830000-0000	4	Arm Breaker	
3	4504005	8	Flat Washer 10-200HV	
4	4501006	16	Lock Washer 10	
5	4308006	4	Nut M10-8	
6	4308009	4	Nut M16-8	
7	4501009	5	Lock Washer 16	
8	4504008	5	Flat Washer 16-200HV	
9	4130006	8	Screw M5*20	
10	8300-500220-0000	1	Mantle	
11	4501003	11	Lock Washer 5	
12	4110001	3	Bolt M5*10-8.8	
13	4504002	3	Flat Washer 5-200HV	
14	410008	6	Bolt M6*50-8.8	
15	4501012	6	Flat Washer 6-200HV	
16	4308004	6	Nut M6-8	
17	8200-500060-0000	2	Limited Rod	
18	4110011	4	Bolt M8*25-8.8	
19	411001	1	Bolt M16*1.5*50-8.8	
20	8300-500000-1070	1	Washer	
21	4501011	1	Lock Washer22	
22	4110031	4	Bolt M20*75-10.9	
23	4110006	4	Bolt M6*20-8.8	
24	8300-500000-1030	4	End Pin	

## BOOM

---

Item	Part Number	Qty	Description	Memo
25	4501004	10	Lock Washer 6	
26	8300-500000-1010	4	Pin	
27	8250-500020-0000	1	Bracket	
28	4110018	8	Bolt M10*30-8.8	
29	8300-500080-0000	1	Shelf	
30	6208004	1	Swing Motor	
31	8250-500000-1010	1	Rotating Shaft	
32	4308011	1	Nut M22-8	
33	4501011	1	Lock Washer22	
34	8270-500020-0001	1	Link Span	
35	5102010	8	Bearing	

Chart 4-1

# BOOM

## GTZZ15

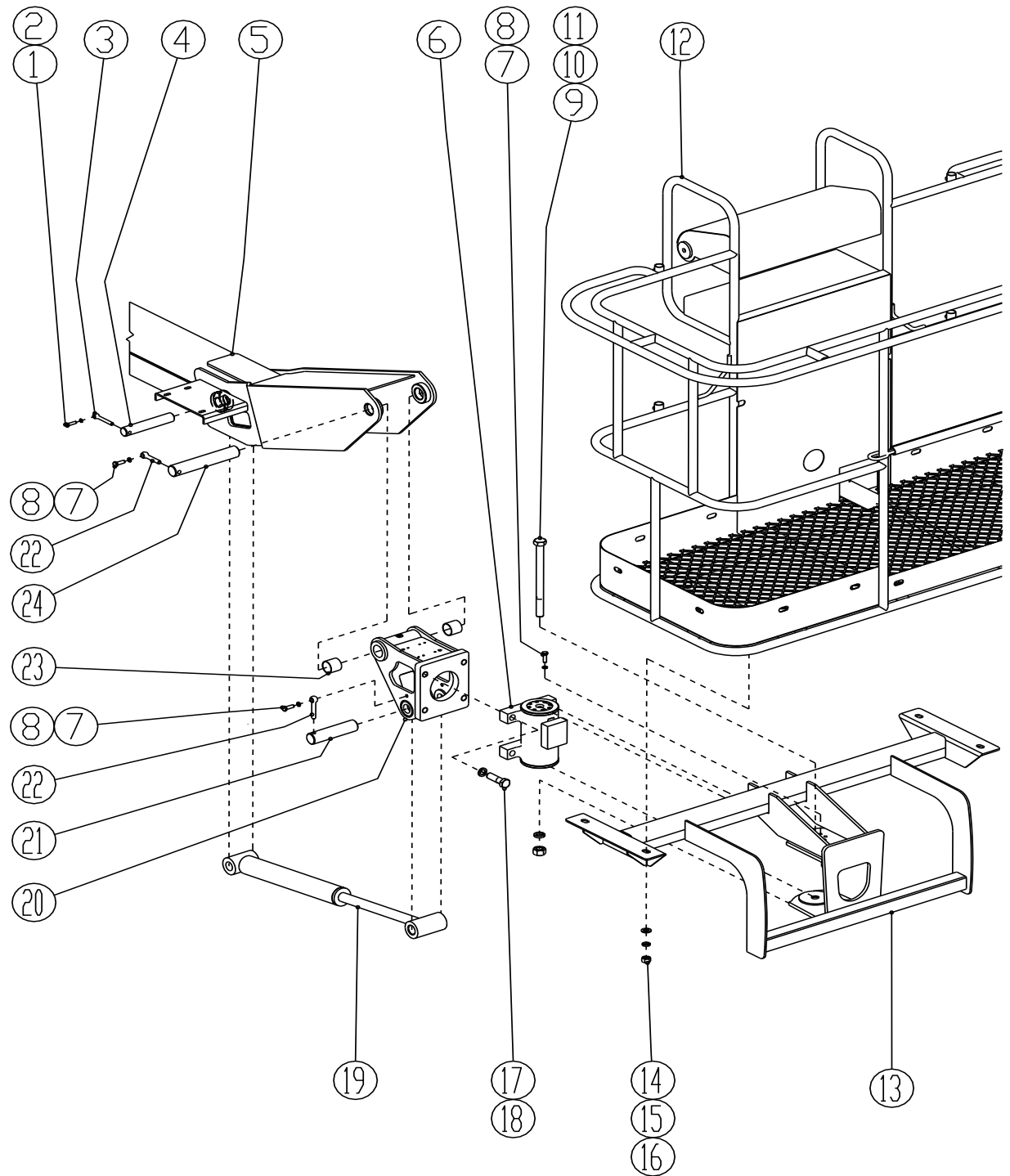


Fig 4-2

## BOOM

Item	Part Number	Qty.	Description	Memo
1	4110012	1	Blot M8*30-8.8	
2	4308005	1	Nut M8-8	
3	7150-010000-1080	1	Lock Rod End	
4	7150-800000-1030	1	Pivot Pin	
5	7150-030000-0000	1	Primary Extension Boom	
6	6208004	1	Platform Rotator	
7	4110018	10	Blot M10*30-8.8	
8	4501006	14	Lock Washer 10	
9	8250-500000-1010	1	Pivot Pin	
10	4501011	1	Lock Washer 22	
11	4308011	1	Nut M22-8	
12	8200-500020-0001	1	Platform Railing	
13	7150-500020-0000	1	Platform Support	
14	4504008	4	Flat Washer 16	
15	4501009	4	Lock Washer 16	
16	4308009	4	Nut M16-8	
17	4110031	4	Blot M20*75-8.8	
18	4501010	4	Lock Washer 20	
19	7150-550000-0000	1	Slave Cylinder	
20	7150-500040-0000	1	Joint Mount	
21	7150-500000-1010	1	Pivot Pin	
22	8300-280000-1120	2	Lock Rod End	
23	5102009	2	Bearing	
24	7150-500000-1020	1	Pivot Pin	

Chart 4-2



## 5. Hydraulic

### 5.1 Hydraulic Schematic: (GTBZ15 2WD)

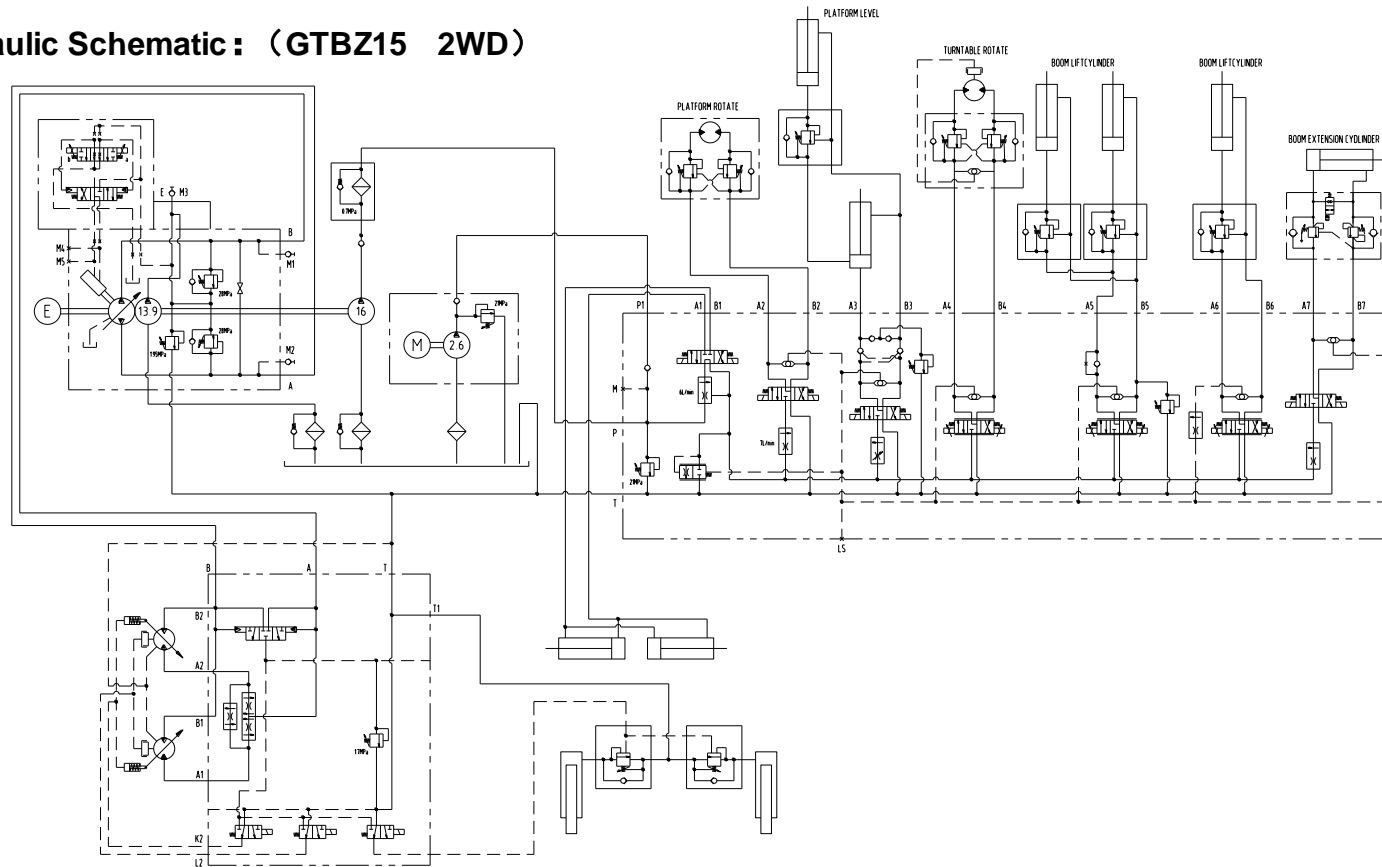


Fig 5-1

# Hydraulic

(GTBZ15 4WD)

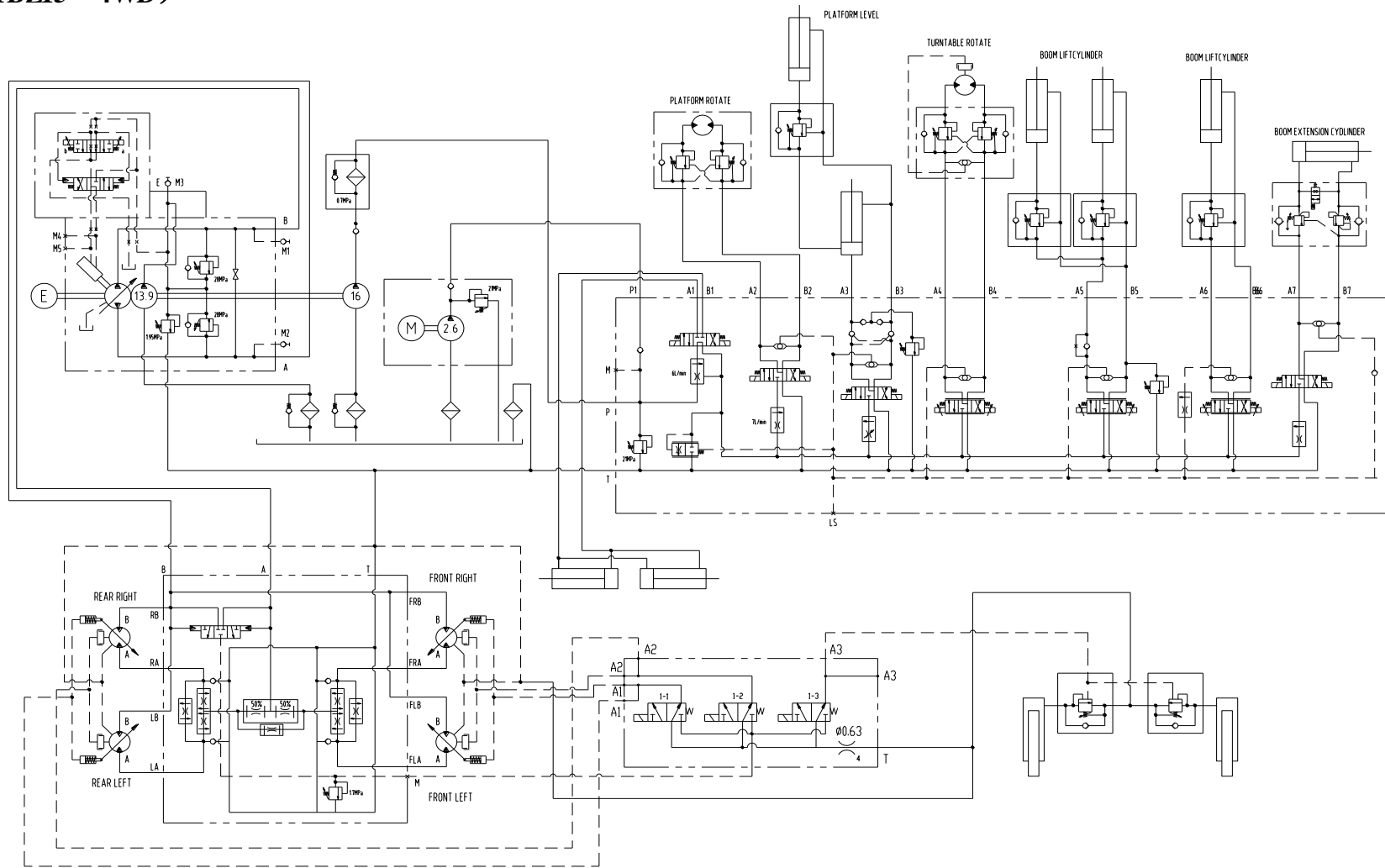


Fig 5-2

GTZZ15 & GTZZ15J



# Hydraulic

(GTBZ15J 4WD)

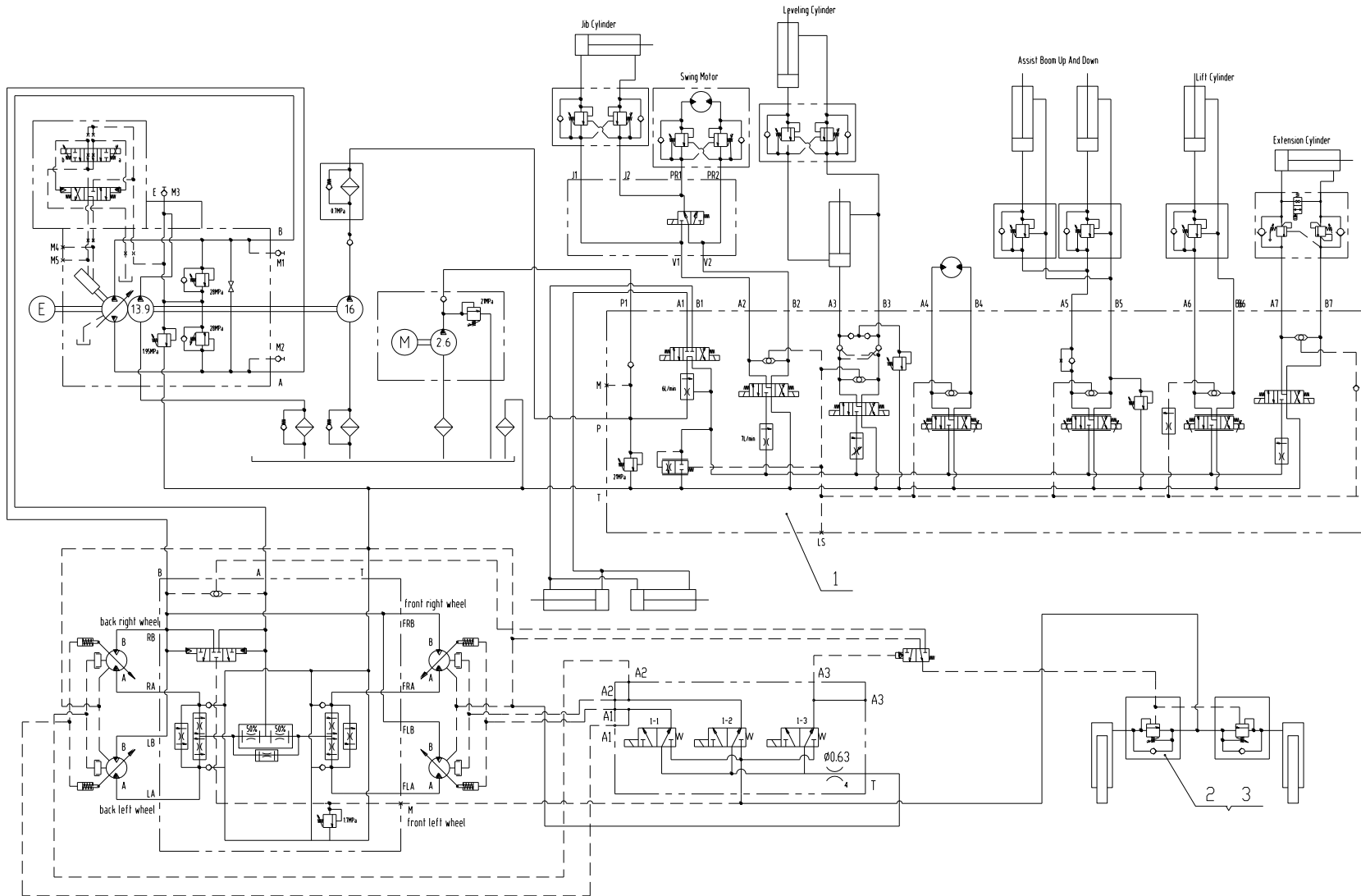


Fig 5-4

## 5.2 Hydraulic Valve :

### 5.2.1 ST0629-A000 Drive Valve

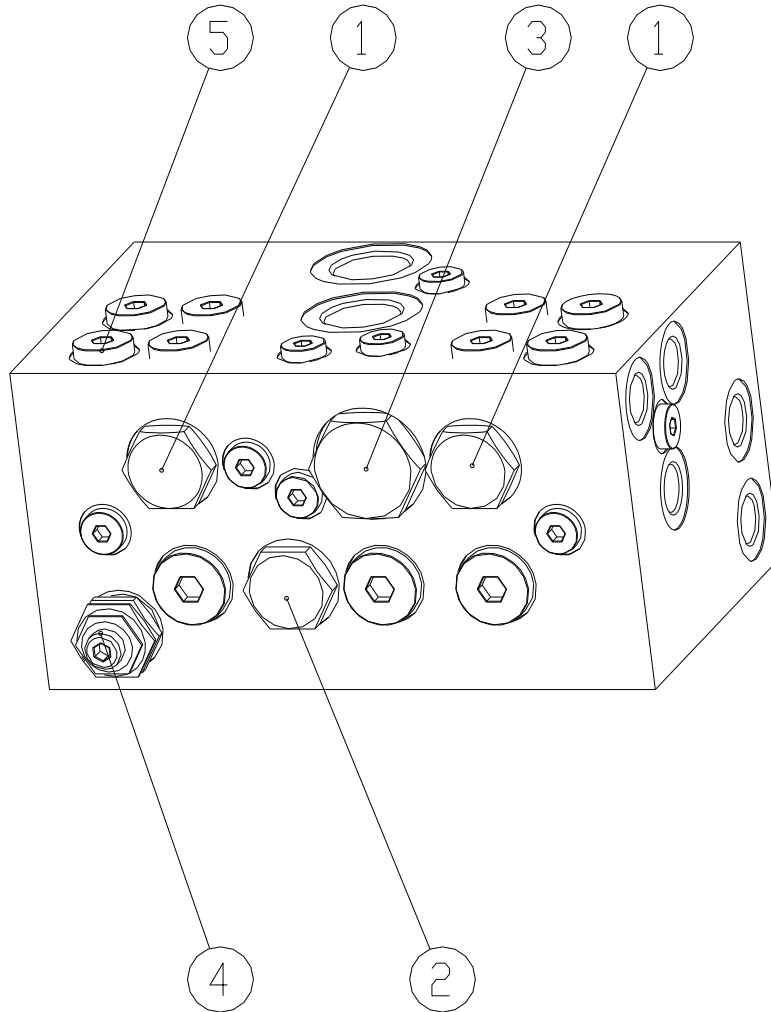


Fig 5-3

## Hydraulic

---

Item	Part Number	Qty	Description
1	Shuttle Valve	2	
2	hydraulic operated Directional valve	1	
3	Flow divider/combiner valve	1	
4	Relief Valve	1	
5	Check valve	4	

Chart 5-1

## 5.2.2 ST1057-AC00 Choose Mode Valve

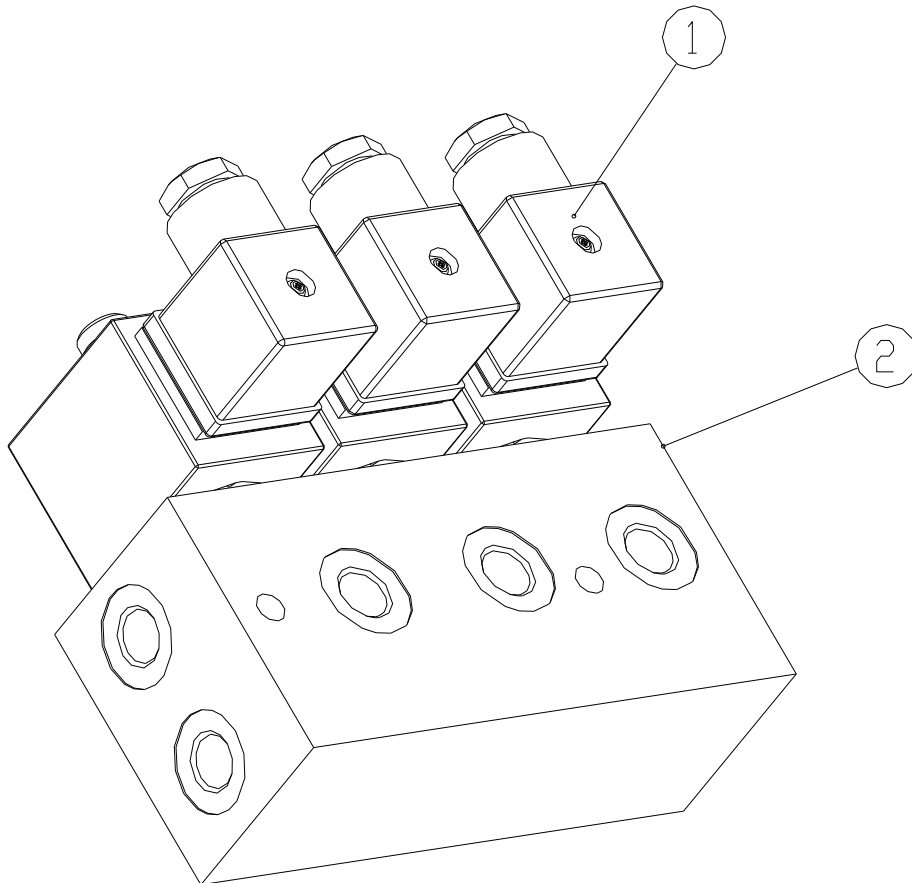


Fig 5-4

Item	Part Number	Qty	Description
1	Solenoid operated Directional valve	3	
2	Valve body	1	

Chat 5-2

## 5.2.3 ST1083-AB00 Function Manifold

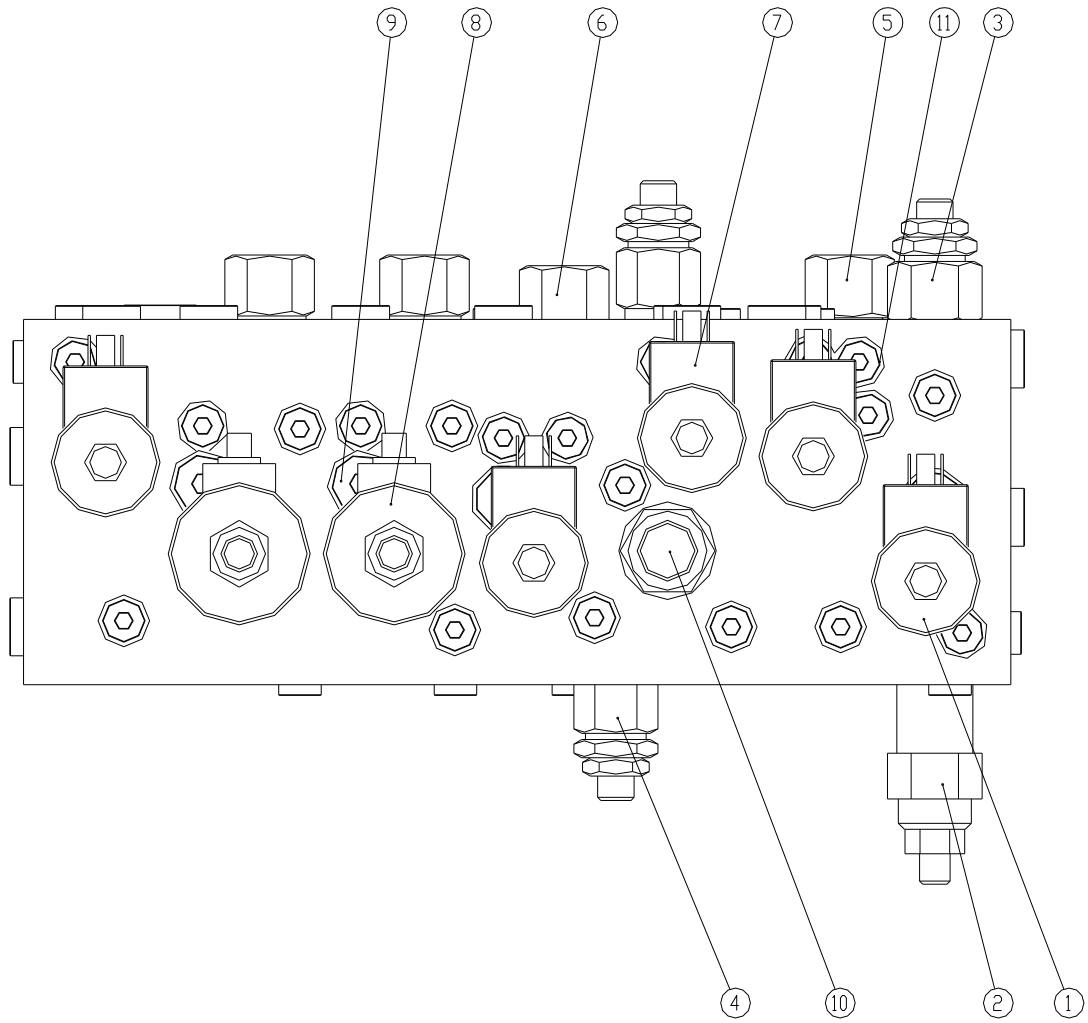


Fig 5-5



## Hydraulic

---

Item	Part Number	Qty	Description
1	Solenoid operated 3 position,4way directional	1	
2	Flow valve	1	
3	Relief Valve	1	
4	Relief Valve	2	
5	Differential sensing valve	1	
6	Differential sensing valve	3	
7	Solenoid operated 3 position,4way directional	3	
8	Solenoid operated 3 position,4way directional	2	
9	Load shuttle,ball-type in-line plumbed valve	3	
10	Check,dual pilot-to-open	1	

Chart 5-3

## 5.2.4 ST0887-A000 Unilateralist Counterbalance Valve

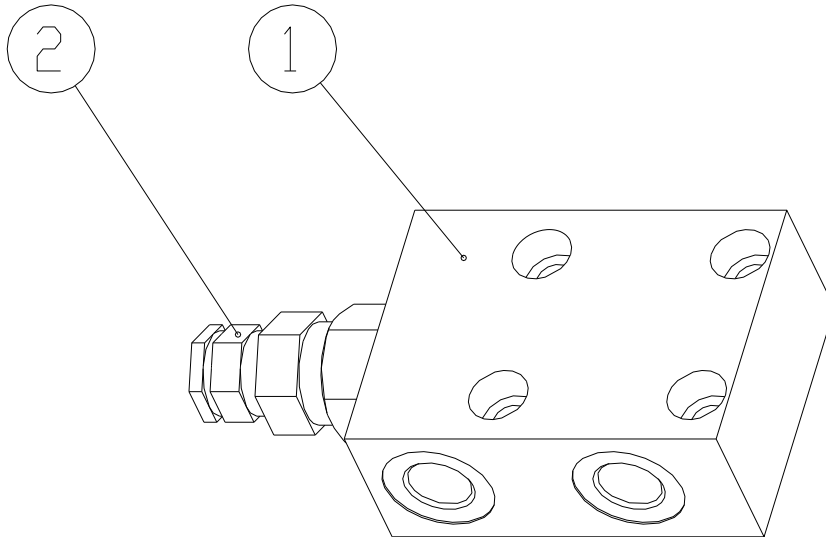


Fig 5-6

Item	Part Number	Qty	Description
1	Valve body	1	
2	Counterbalance valve	1	

Chart 5-4

## 5.2.5 ST0883-A000 Unilateralist Counterbalance Valve

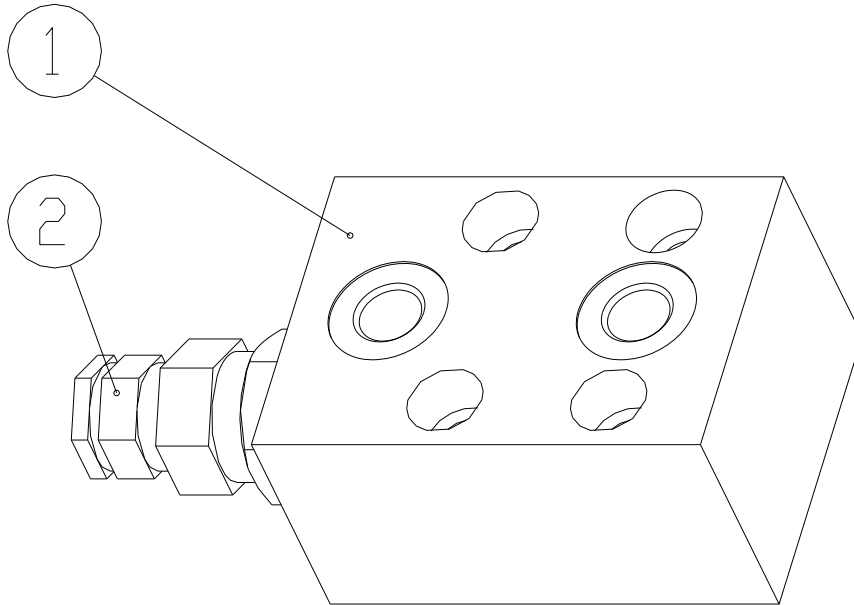


Fig 5-7

Item	Part Number	Qty	Description
1	Valve body	1	
2	Counterbalance valve	1	

Chart 5-5

## 5.2.6 ST1084-AB00 Flex Counterbalance Valve

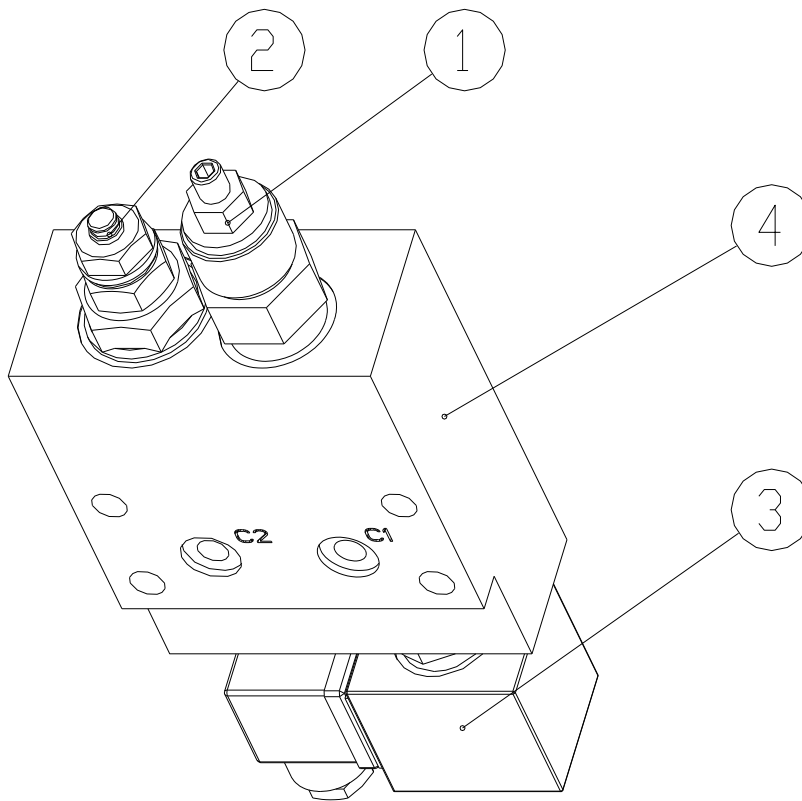


Fig 5-8

Item	Part Number	Qty	Description
1	Counterbalance valve	1	
2	Relief Valve	1	
3	Solenoid operated 2 position 3 way Directional valve	1	
4	Valve body	1	

Chart 5-6

5.2.7 ST1530-AB00

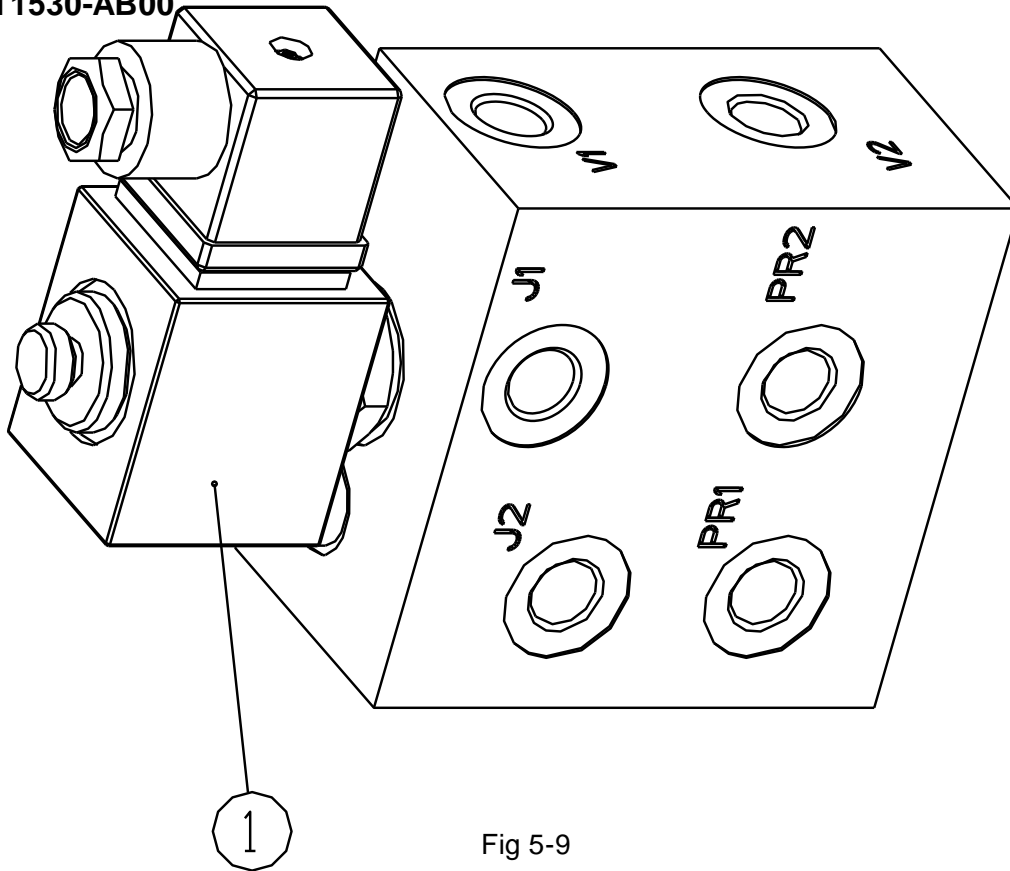


Fig 5-9

Item	Part Number	Qty	Description
1	2 position 3 way Directional valve	1	

Chart 5-7

## 5.3 Hydraulic Pipe Schematic—GTZZ15

### Turntable function manifold(boom)

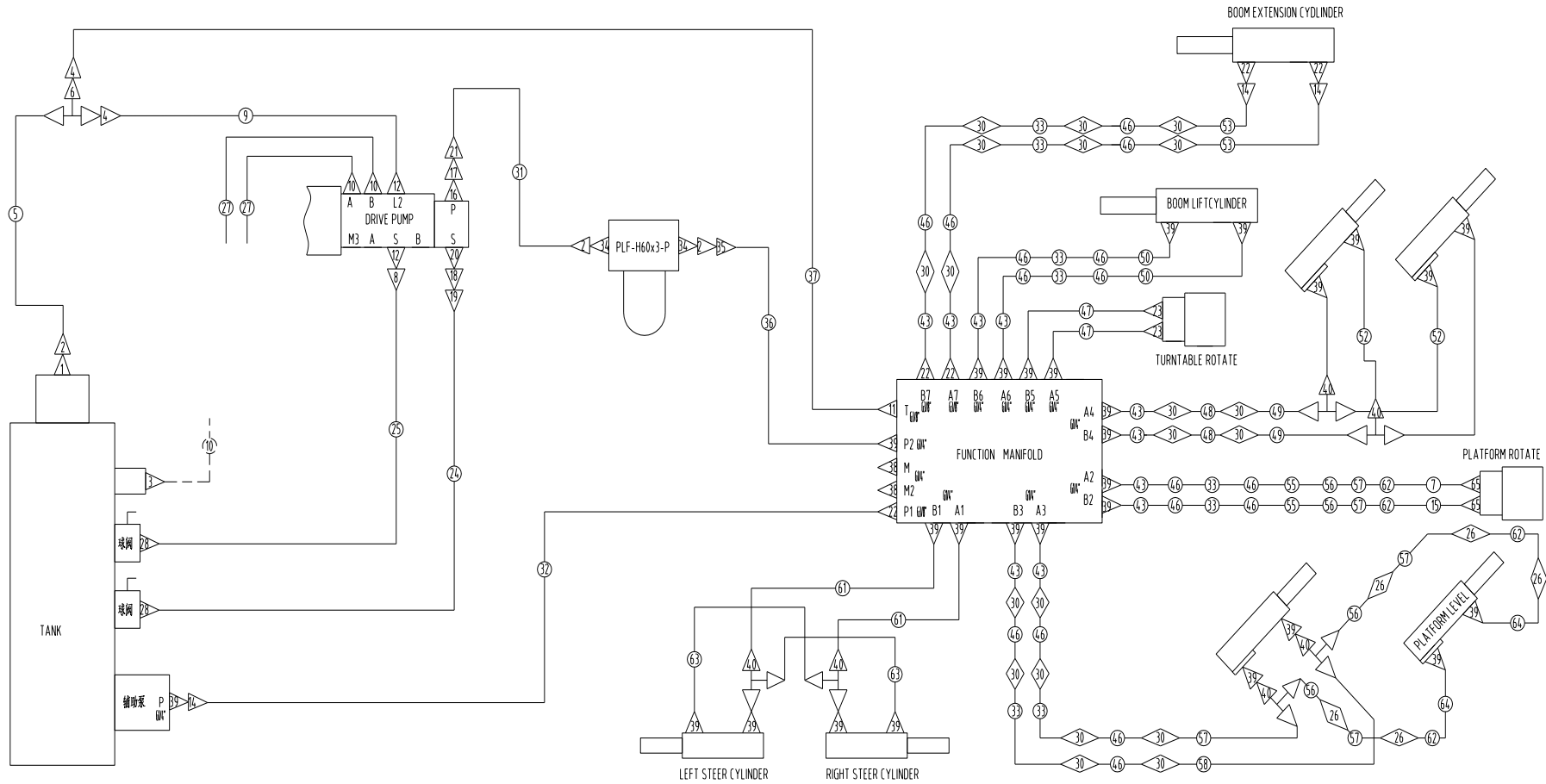


Fig 5-10

## Hydraulic

Item	Part Number	Qty	Description	Memo
1		1	Fitting	
2	5402005	3	Airproof Ring	
3	6201004	1	Fitting	
4	6201092	2	Fitting	
5	6203328	1	Cannulation	
6	6201093	1	Fitting	
7	6203359	1	Cannulation	
8	6201135	1	Fitting	
9	6203329	1	Cannulation	
10		2	Fitting	
11	6201130	1	Fitting	
12	6201038	2	Fitting	
14	6201089	3	Fitting	
15	6203306	1	Cannulation	
16		1	Flange Fitting	
17	4152008	4	Screw	
18	4501006	4	Washer	
19	4152016	4	Screw	
20		1	Flange Fitting	
21	4501005	4	washer	
22	6201088	5	Fitting	
23	6201097	2	Fitting	
24	6203331	1	Cannulation	
25	6203332	1	Cannulation	
26	6201121	6	Fitting	
27	6203333	2	Fitting	
28	6201095	2	Fitting	
30	6201022	40	Airproof Ring	

## Hydraulic

31	6203334	1	Cannulation	
32	6203335	1	Cannulation	
33	6203342	8	Cannulation	
34		2	Fitting	
35	6201101	1	Fitting	
36	6203337	1	Cannulation	
37	6201132	1	Fitting	
38	6201017	2	Fitting	
39	6201001	26	Fitting	
40	6201103	6	Fitting	
43	6203339	10	Cannulation	
46		16	Steel Tube	
47	6203340	2	Cannulation	
48		2	Steel Tube	
49	6203361	2	Cannulation	
50	6203341	2	Cannulation	
52	6203343	2	Cannulation	
53	6203366	2	Cannulation	
55	6203362	2	Cannulation	
56		4	Steel Tube	
57	6203363	5	Cannulation	
58	6203364	1	Cannulation	
61	6203345	2	Cannulation	
62		4	Steel Tube	
63	6203368	2	Cannulation	
64	6203365	2	Cannulation	
65	6201077	2	Fitting	

Chart 5-8





## Hydraulic

Item	Part Number	Qty	Description	Memo
1		1	Fitting	
2	5402005	3	Airproof Ring	
3	6201004	1	Fitting	
4	6201092	2	Fitting	
5	6203328	1	Cannulation	
6	6201093	1	Fitting	
7	6203359	1	Cannulation	
8	6201135	1	Fitting	
9	6203329	1	Cannulation	
10		2	Fitting	
11	6201130	1	Fitting	
12	6201038	2	Fitting	
14	6201089	3	Fitting	
15	6203306	1	Cannulation	
16		1	Flange Fitting	
17	4152008	4	Screw	
18	4501006	4	Washer	
19	4152016	4	Screw	
20		1	Flange Fitting	
21	4501005	4	washer	
22	6201088	5	Fitting	
23	6201097	2	Fitting	
24	6203331	1	Cannulation	
25	6203332	1	Cannulation	
26	6201121	6	Fitting	
27	6203333	2	Fitting	
28	6201095	2	Fitting	
30	6201022	40	Airproof Ring	
31	6203334	1	Cannulation	
32	6203335	1	Cannulation	
33	6203342	8	Cannulation	
34		2	Fitting	
35	6201101	1	Fitting	
36	6203337	1	Cannulation	
37	6201132	1	Fitting	
38	6201017	2	Fitting	
39	6201001	26	Fitting	
40	6201103	6	Fitting	
43	6203339	10	Cannulation	
46		16	Steel Tube	
47	6203340	2	Cannulation	
48		2	Steel Tube	

## Hydraulic

---

49	6203361	2	Cannulation	
50	6203341	2	Cannulation	
52	6203343	2	Cannulation	
53	6203366	2	Cannulation	
55	6203362	2	Cannulation	
56		4	Steel Tube	
57	6203363	5	Cannulation	
58	6203364	1	Cannulation	
61	6203345	2	Cannulation	
62		4	Steel Tube	
63	6203368	2	Cannulation	
64	6203365	2	Cannulation	
65	6201077	2	Fitting	
66	6201119	1	Fitting	
67		2	Cannulation	
68		2	Cannulation	

Chart 5-9

## 5.4 Hydraulic Pipe Schematic(Drive)

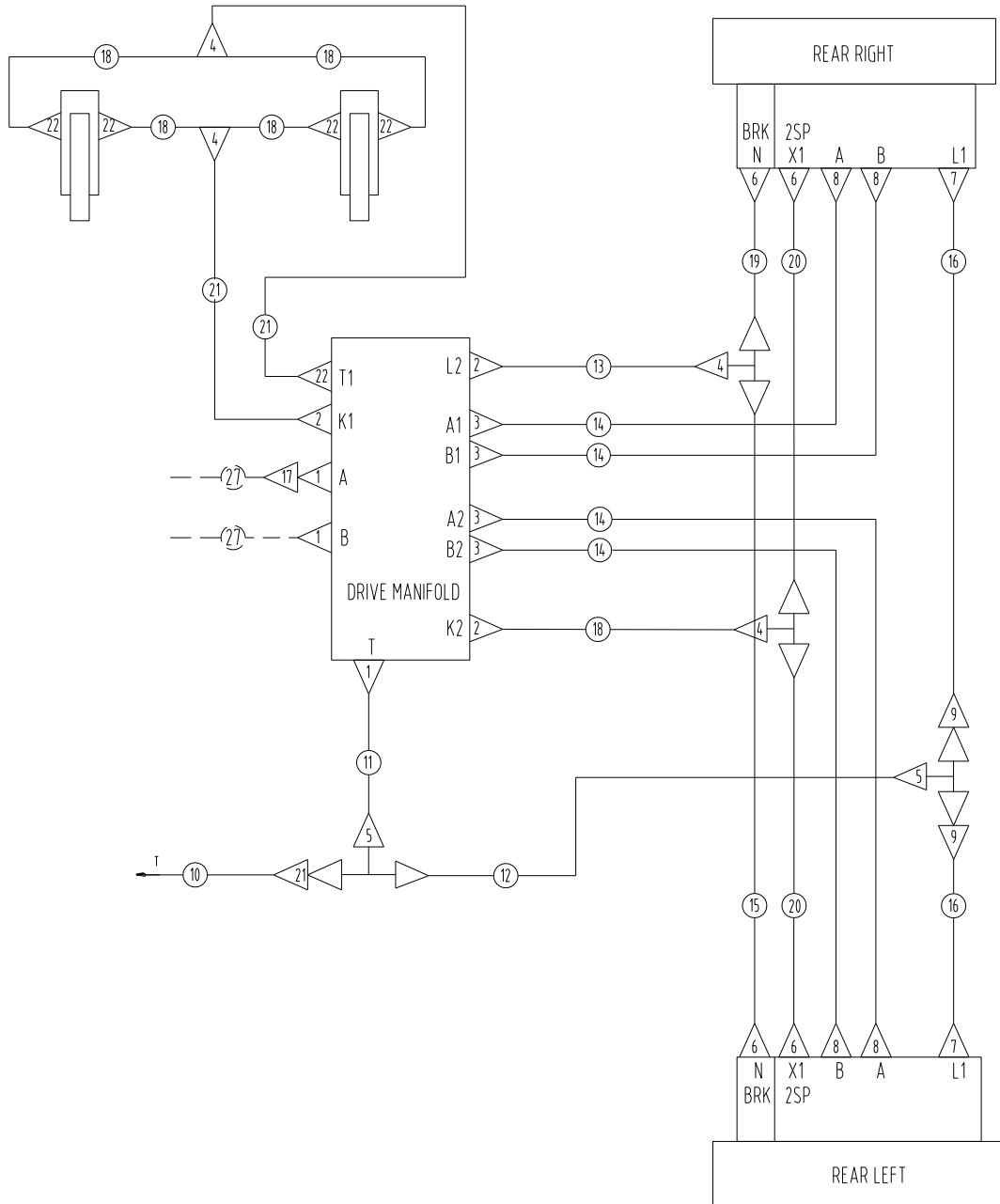


Fig 5-12

## Hydraulic

---

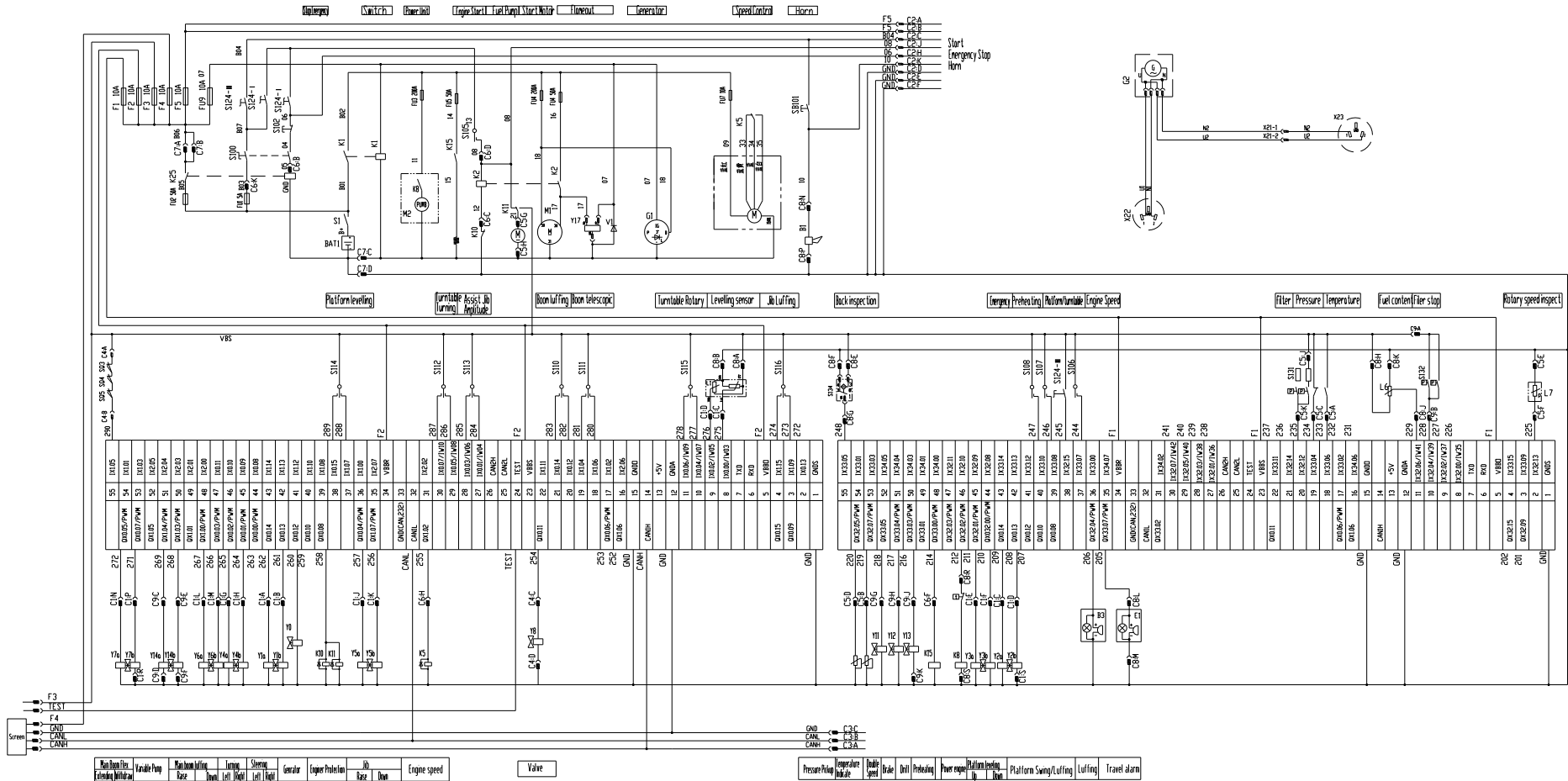
Item	Part Number	Qty	Description	Memo
1	6201036	3	Fitting	
2	6201001	3	Fitting	
3	6201007	4	Fitting	
4	6201102	5	Fitting	
5	6201104	2	Fitting	
6	6201028	4	Fitting	
7	6201006	2	Fitting	
8	6201136	4	Fitting	
9	6201099	3	Fitting	
10	6203073	1	Cannulation	
11	6203348	1	Cannulation	
12	6203349	1	Cannulation	
13	6203350	1	Cannulation	
14	6203351	4	Cannulation	
15	6203352	1	Cannulation	
16	6203353	2	Cannulation	
17	6201126	1	Fitting	
18	6203354	5	Cannulation	
19	6203355	1	Cannulation	
20	6203356	2	Cannulation	
21	6203248	2	Cannulation	
22	6201088	5	Fitting	

Chart 5-10



# Nameplate

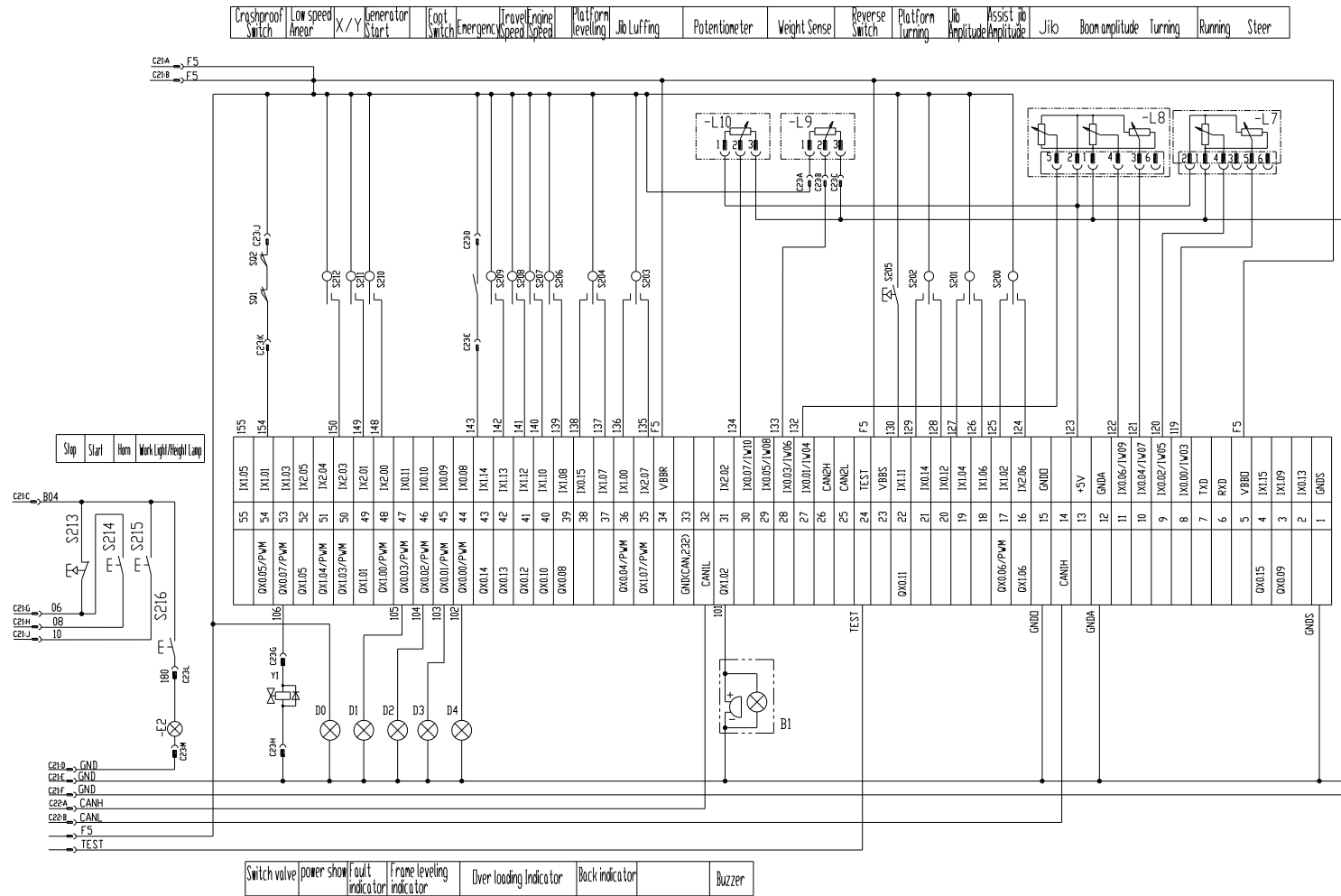
## GTZZ15J Turntable



GTZZ15 & GTZZ15J

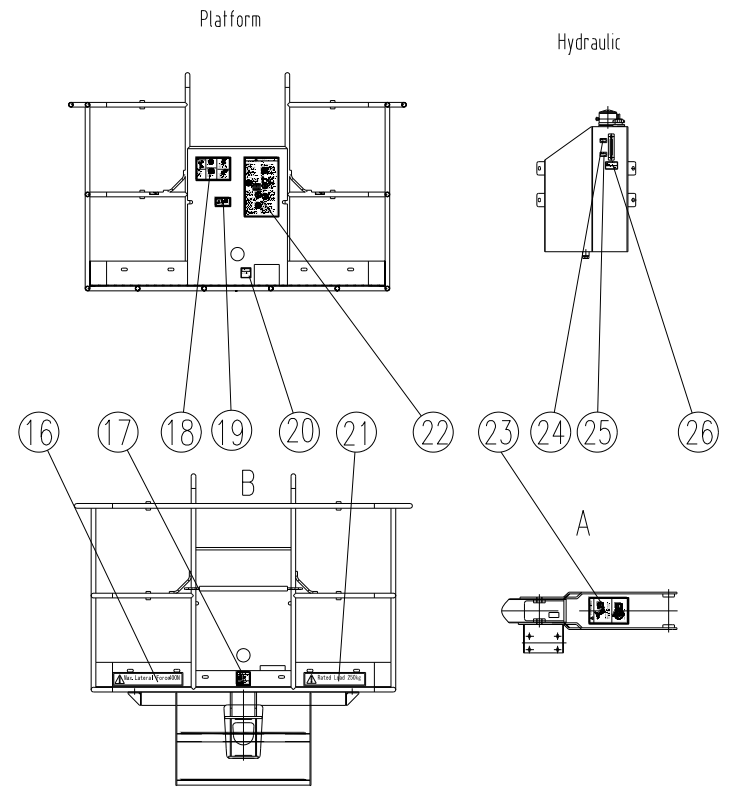
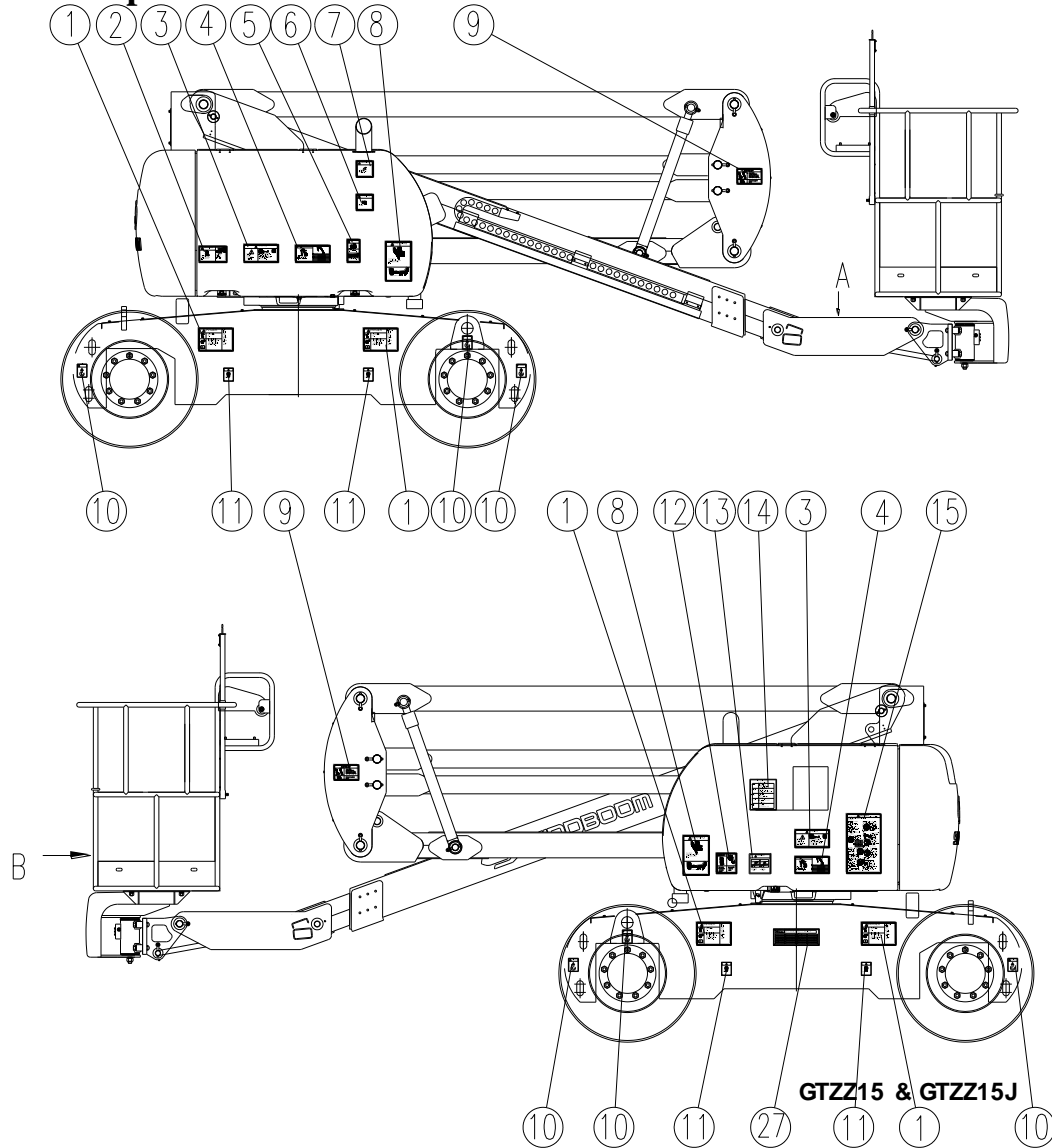
# Nameplate

## GTZZ15J Platform





7 Nameplate



## Nameplate

---

Item	Description	Qty.
1	Screw Down Torque	4
2	Explosion Hazard	1
3	Don' t Access Compartment	2
4	Electrocution Hazard	2
5	Bodily injury hazard	2
6	Hot engine	1
7	Hot off-gas	1
8	Keep away from moving parts	2
9	Do not alter or disable limit switches	2
10	Hiking up	6
11	Max. carrying capacity of tire	4
12	No smoking	1
13	Lock Pin	1
14	Maintenance schedules	1
15	Attentions	2
16	Max. Manual	1
17	Keep away from path of moving platform	1
18	Stop all movement when danger	1
19	Read operator' s manual	1
20	Foot switch	1
21	Rated load	1
23	Keep off boom surface	1
24	Max. content gauge	1
25	Min. content gauge	1
26	Oil Temperature	1
27	Nameplate	1